



**UTM**  
**UNIVERSITI TEKNOLOGI MALAYSIA**

**FACULTY OF ENGINEERING**  
**SCHOOL OF COMPUTING**

**SECR/SCSR1213 - 03**  
**NETWORK COMMUNICATION**  
**PROJECT - TASK 1**  
**GROUP G**

**LECTURER :**  
DR RAJA ZAHILAH BINTI RAJA MOHD RADZI

**GROUP NAME : GG**

**GROUP MEMBERS :**

LIEW WEI XIAN	[A19EC0070]
MOHAMAD SYAHMI BIN MOHAMED SAINI	[A19SC0449]
SAIFUL HABIB DANIAL BIN SHIFUL ANUAR	[A19EC0157]
NUR AZIZAH BINTI MOHAMMAD MOKHTAR	[A17KM0351]

## FLOOR PLAN :

Note : Scaling on the parameter of the building for every floor plan is measured in cm

### a) Ground Floor :



Figure 1 : Floor Plan for Ground Floor 1

b) 1<sup>st</sup> Floor :

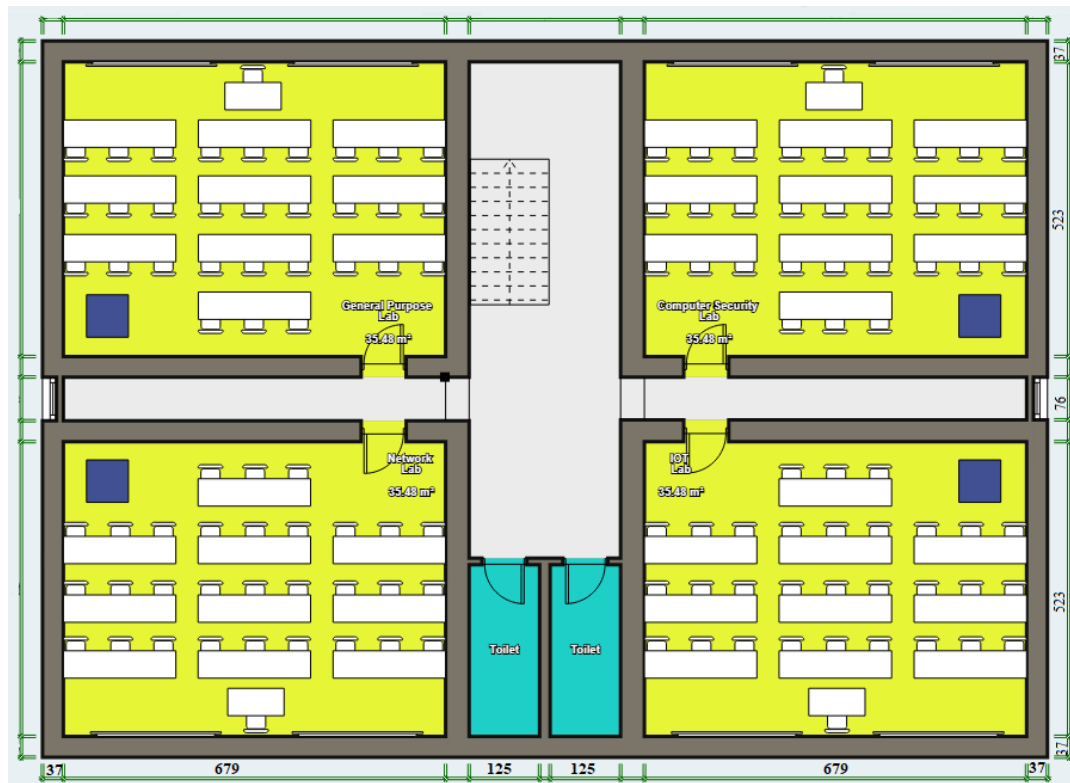


Figure 2 : Floor Plan for First Floor 1

■ : Multi-terabyte storage server