

SEM 1 2019-2020
SCSD2523-03 DATABASE
LAB PRACTICE 1
JUSTLEE BOOKS DATABASE

JustLee Books database is a database used by JustLee Books Company. The database will record various information, including the company's customers, the books the company sells, the book orders of customers, and the promotions the company provides for books. Figure 1.1 shows the initial organization of the database structure for JustLee Books.

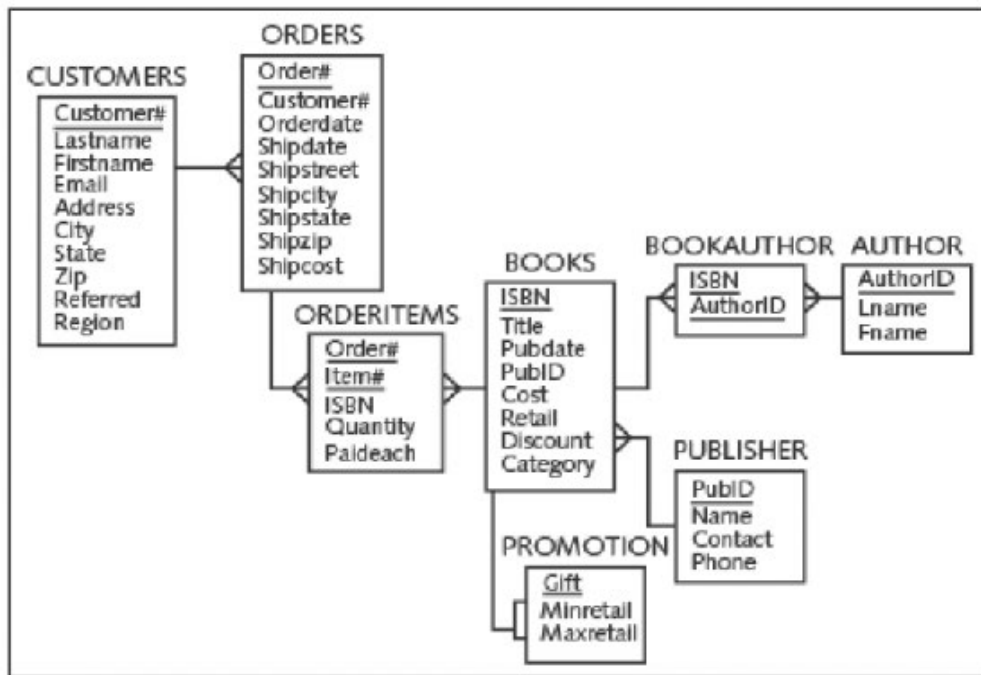


Figure 1.1 JustLee Books Data Model

Table 1.1 provides simple description for each table in the database.

Table 1.1 JustLee Books Tables Description

Table	Description
Customers	Storing basic data of customers who placed an order with JustLee Book
Orders	Data about a customer's order
OrderItems	Data on every item ordered by a customer in one order

Author	Storing basic Authors information
Books	Storing books information
Publisher	Storing book's publisher information
BookAuthor	Stores book's ISBN with the Author's ID
Promotion	Storing annual promotion for each book purchased

Using SQL Developer, construct appropriate SQL command(s) for each of the following tasks:

1. Run the queries in the **JLDB_Build.sql** to create and populate the tables for JustLee Books database. For each created table, display the table's structure using the *DESCRIBE* command.
2. Create a new table containing the category code and description for the categories of books sold by JustLee Books. The table should be called CATEGORY, and the columns should be CatCode and CatDesc. The CatCode column should store a maximum of 2 characters, and the CatDesc column should store a maximum of 10 characters.
3. Create a new table containing these four columns: Emp#, Lastname, Firstname, and Job_class. The table name should be EMPLOYEES. The Job_class column should be able to store character strings up to a maximum length of four, but the column values shouldn't be padded if the value has less than four characters. The Emp# column contains a numeric ID and should allow a five-digit number. Use column sizes you consider suitable for the Firstname and Lastname columns.
4. Add two columns to the EMPLOYEES table. One column, named EmpDate, contains the date of employment for each employee, and its default value should be the system date. The second column, named EndDate, contains employees' date of termination.
5. Modify the Job_class column of the EMPLOYEES table so that it allows storing a maximum width of two characters.
6. Delete the EndDate column from the EMPLOYEES table.
7. Rename the EMPLOYEES table as JL_EMPS.

8. Create a new table containing these four columns from the existing BOOKS table: ISBN, Cost, Retail, and Category. The name of the ISBN column should be ID, and the other columns should keep their original names. Name the new table **BOOK_PRICING**.
9. Mark the Category column of the BOOK_PRICING table unused. Verify that the column is no longer available.
10. Delete the BOOK_PRICING table permanently so that it isn't moved to the recycle bin. Delete the JL_EMPS table so that it can be restored. Restore the JL_EMPS table and verify that it's available again.

NOTE:

1. **If the needed command is not given in the slide Google them!!**
2. **If, while executing the script file, you encounter any error, observe the error and make necessary correction(s) to the statement.**