

## SKELETAL SYSTEM – AXIAL & APPENDICULAR SKELETON

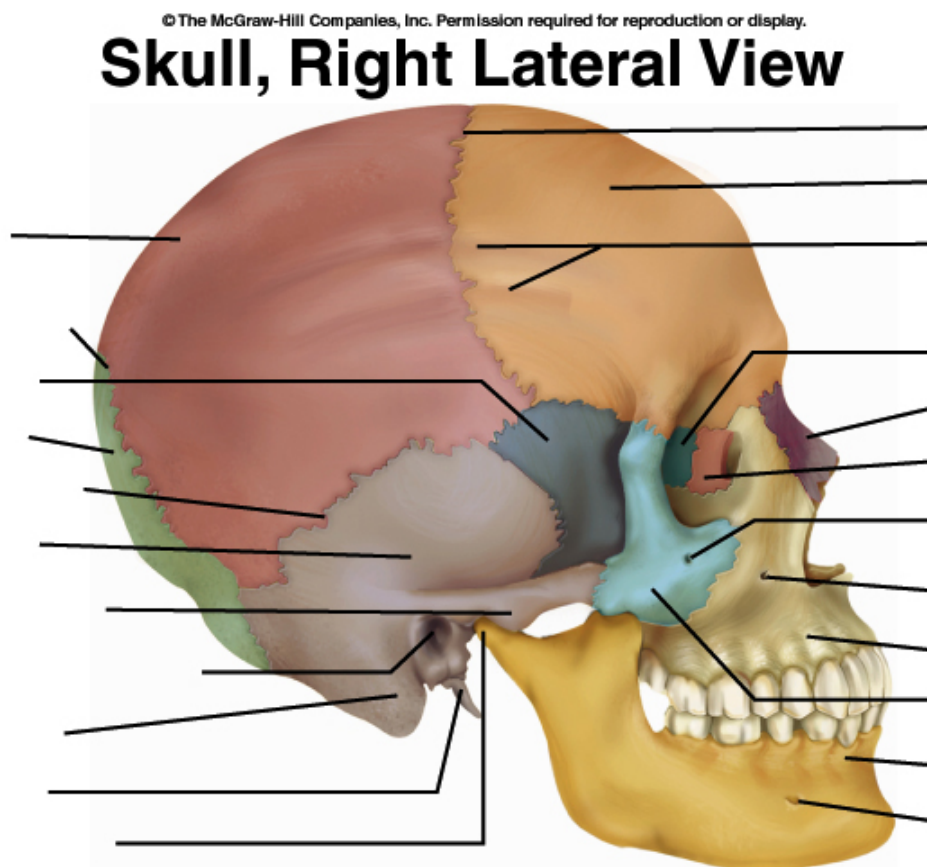
### Learning Outcome

After completing this exercise, you should be able to:

1. Identify, locate and name the area of axial and appendicular skeleton.
2. Distinguish between male and female bone.
3. Differentiate the features of bone.

### Part A

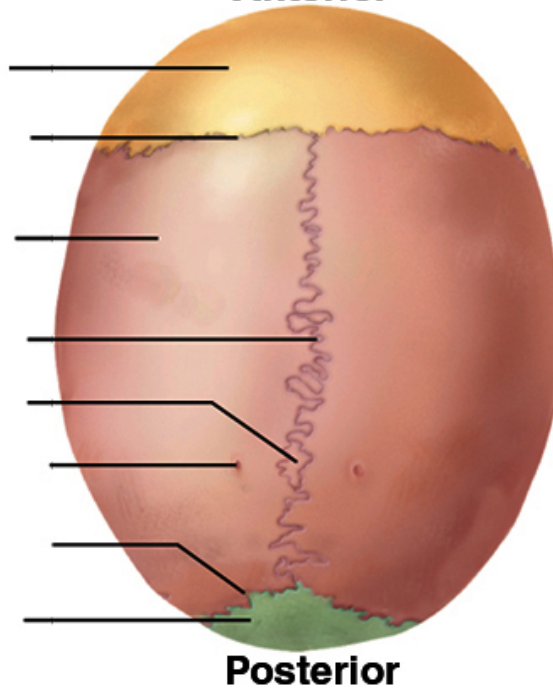
Label the area of axial and appendicular bones.



© The McGraw-Hill Companies, Inc. Permission required for reproduction or display.

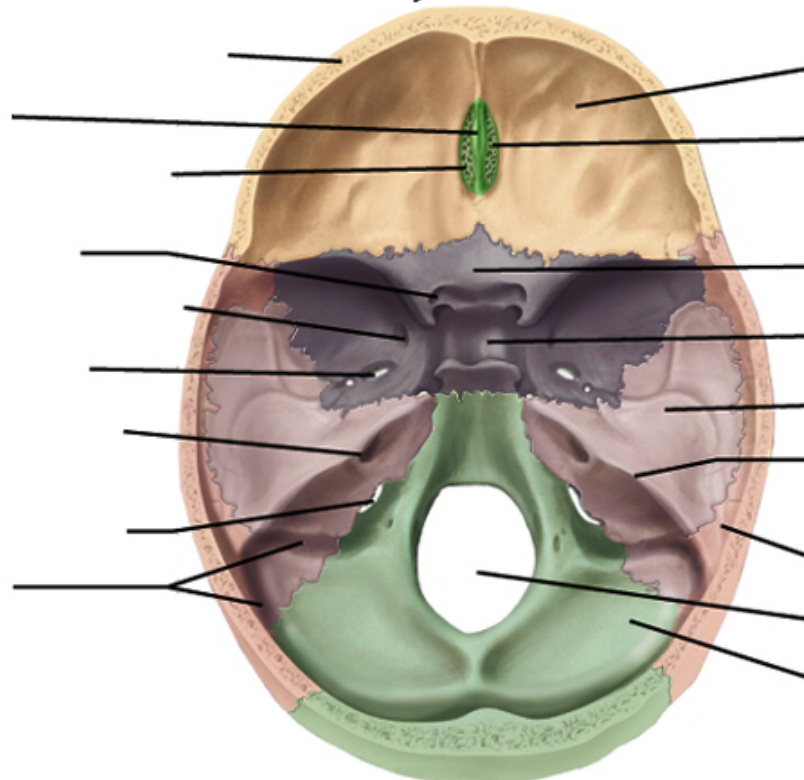
## Calvaria (Skullcap), Superior View

Anterior



© The McGraw-Hill Companies, Inc. Permission required for reproduction or display.

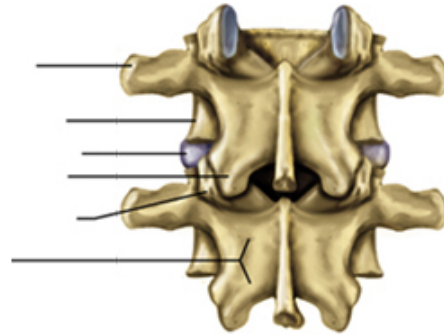
## Cranial Floor, Internal View



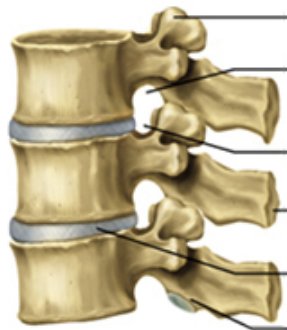
© The McGraw-Hill Companies, Inc. Permission required for reproduction or display.

# Articulated Vertebrae

**Dorsal view**

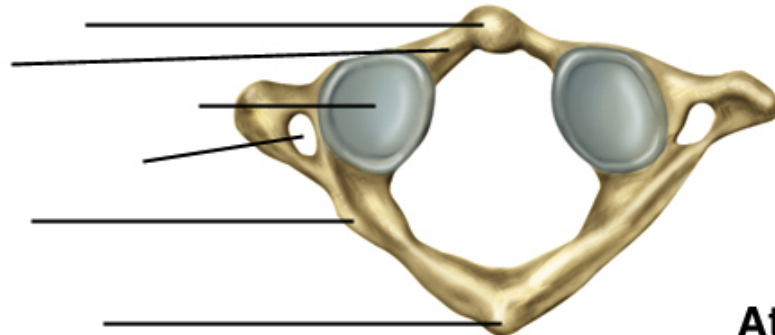


**Lateral view**

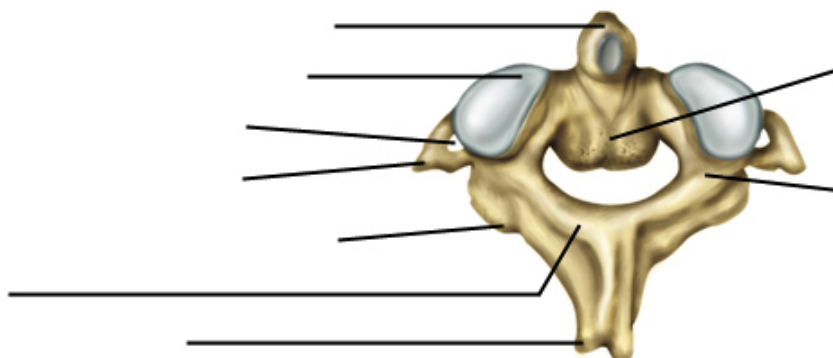


© The McGraw-Hill Companies, Inc. Permission required for reproduction or display.

## Atlas and Axis



**Atlas**

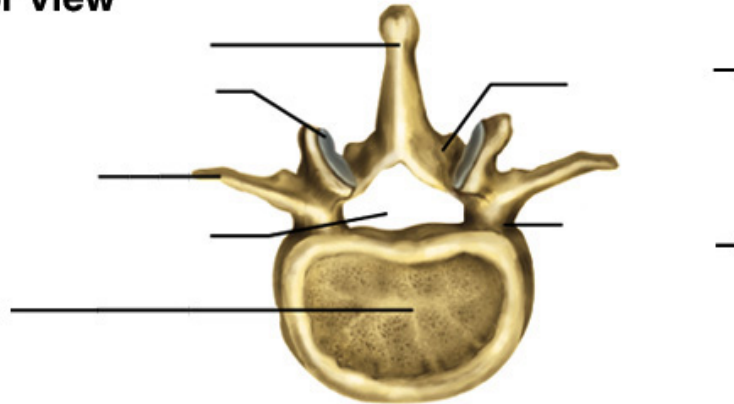


**Axis**

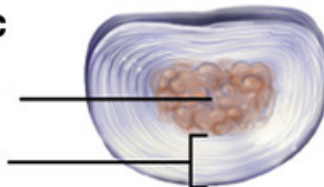
© The McGraw-Hill Companies, Inc. Permission required for reproduction or display.

# Vertebra and Intervertebral Disc, Superior View

2nd lumbar vertebra:  
superior view

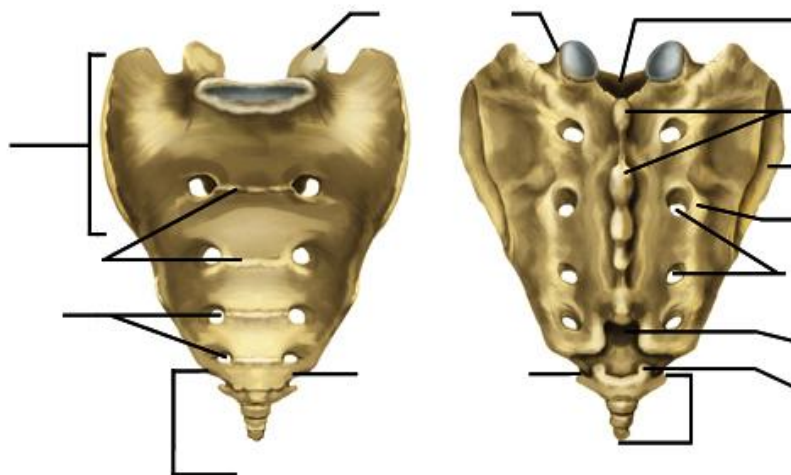


Intervertebral disc



© The McGraw-Hill Companies, Inc. Permission required for reproduction or display.

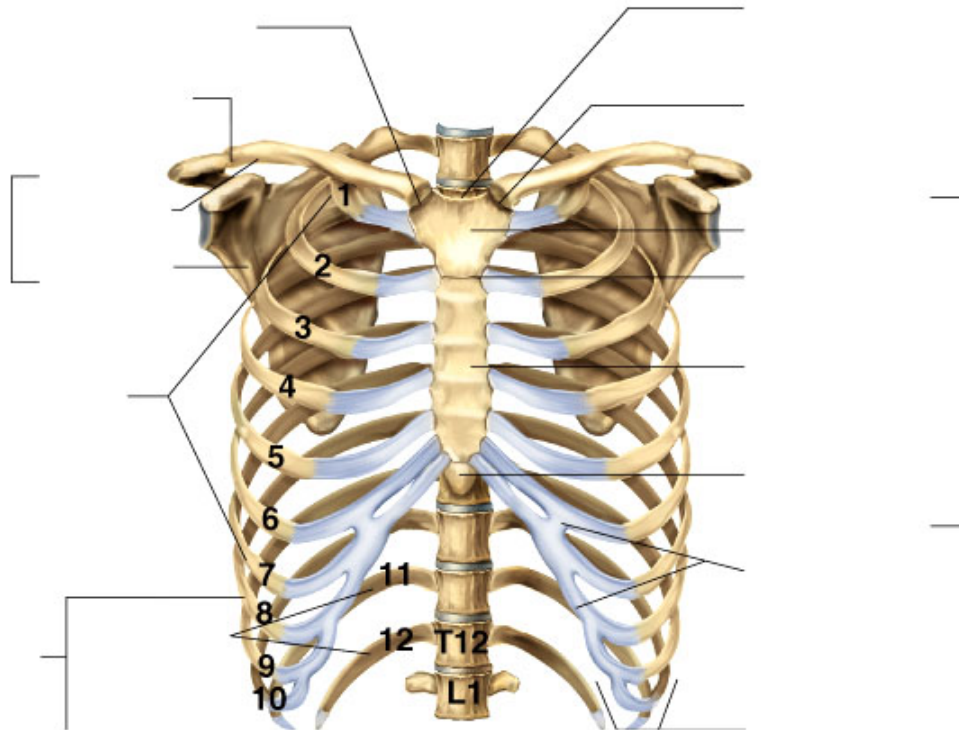
# Sacrum and Coccyx



Anterior surface

Posterior surface

Copyright © The McGraw-Hill Companies, Inc. Permission required for reproduction or display.



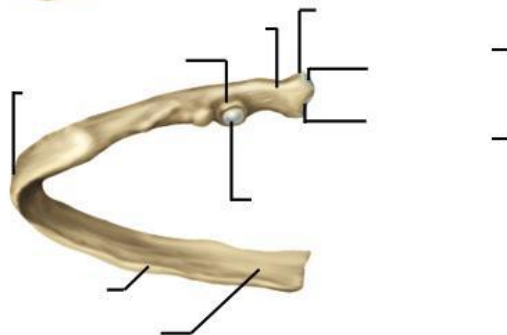
© The McGraw-Hill Companies, Inc. Permission required for reproduction or display.

## Rib Anatomy

Rib 1



Ribs 2-10



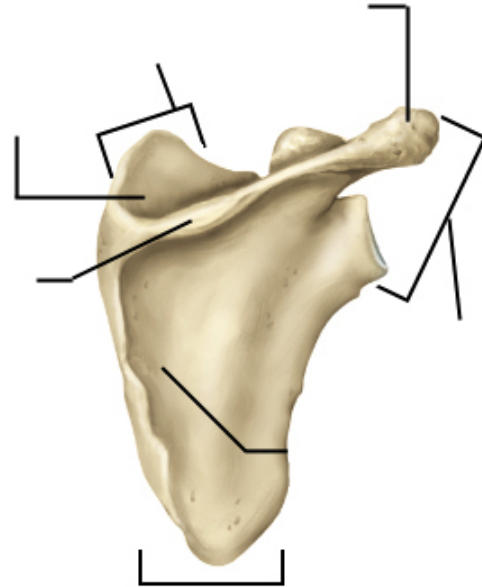
Ribs 11 and 12





© The McGraw-Hill Companies, Inc. Permission required for reproduction or display.

# Scapula

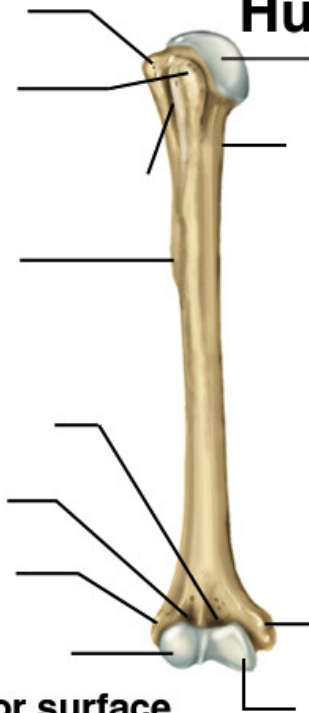


**Anterior view**

**Posterior view**

© The McGraw-Hill Companies, Inc. Permission required for reproduction or display.

# Humerus

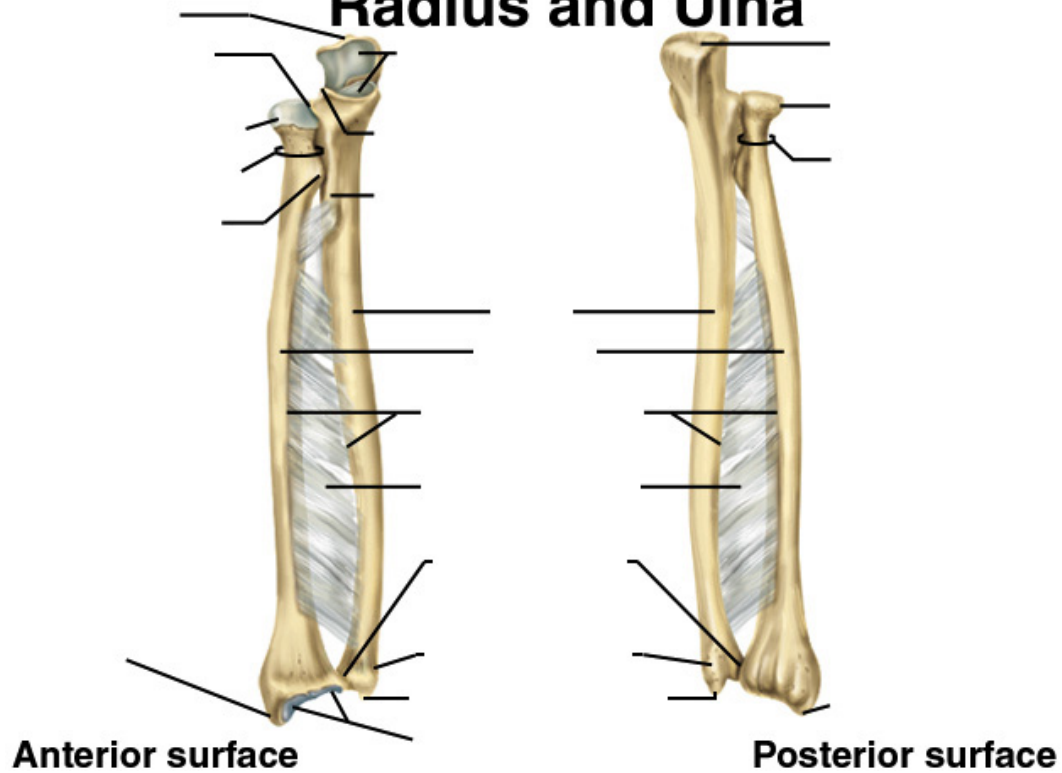


**Anterior surface**

**Posterior surface**

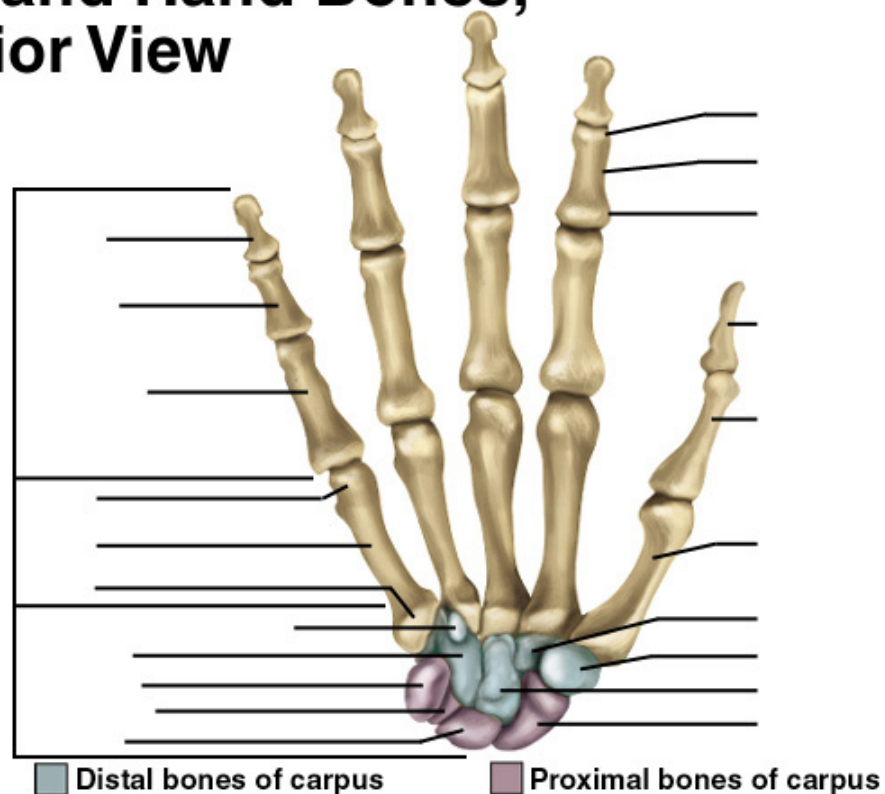
© The McGraw-Hill Companies, Inc. Permission required for reproduction or display.

## Radius and Ulna



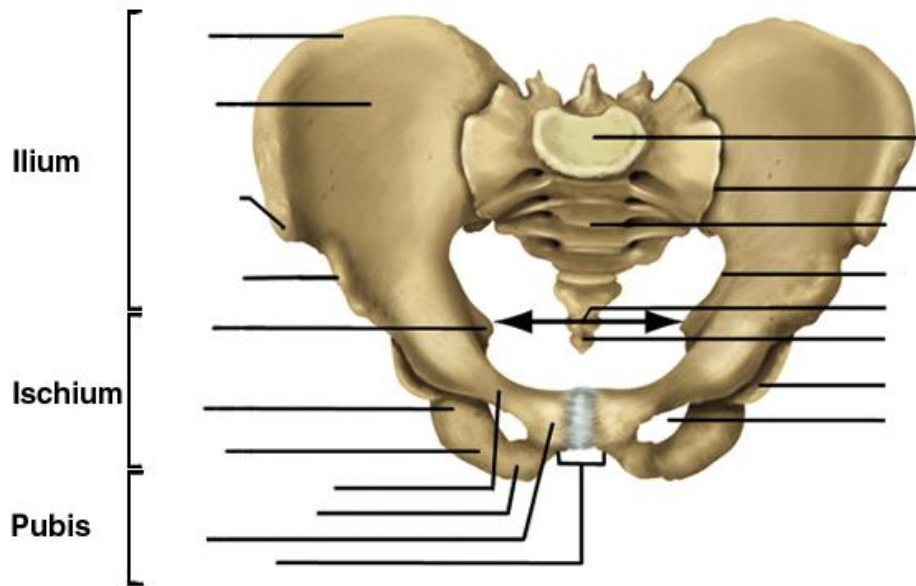
© The McGraw-Hill Companies, Inc. Permission required for reproduction or display.

## Wrist and Hand Bones, Anterior View



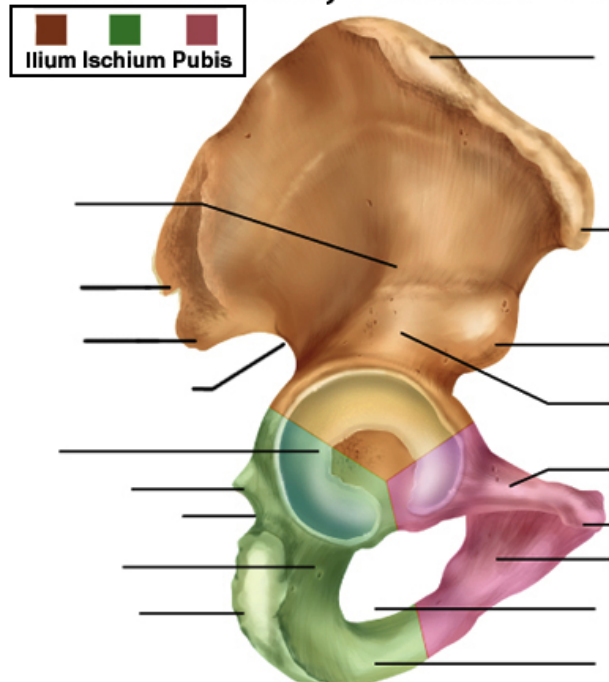
© The McGraw-Hill Companies, Inc. Permission required for reproduction or display.

## Pelvic Girdle



© The McGraw-Hill Companies, Inc. Permission required for reproduction or display.

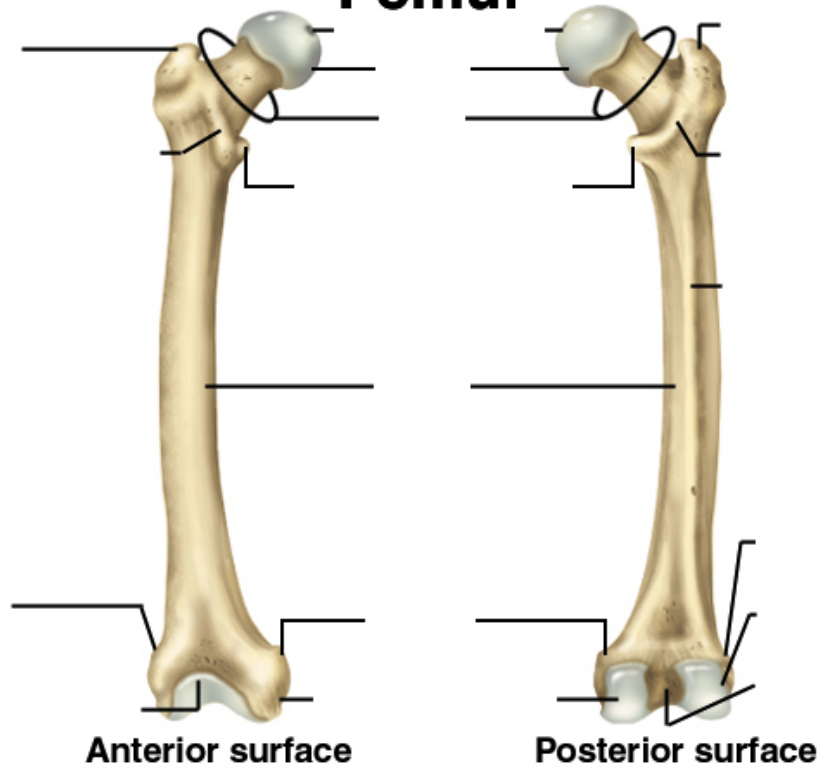
## Os Coxae, Lateral View





© The McGraw-Hill Companies, Inc. Permission required for reproduction or display.

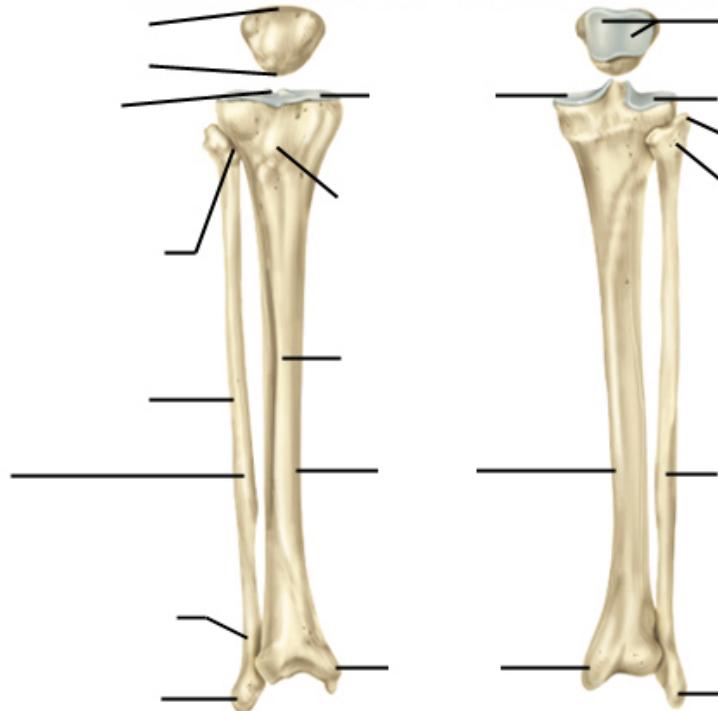
## Femur

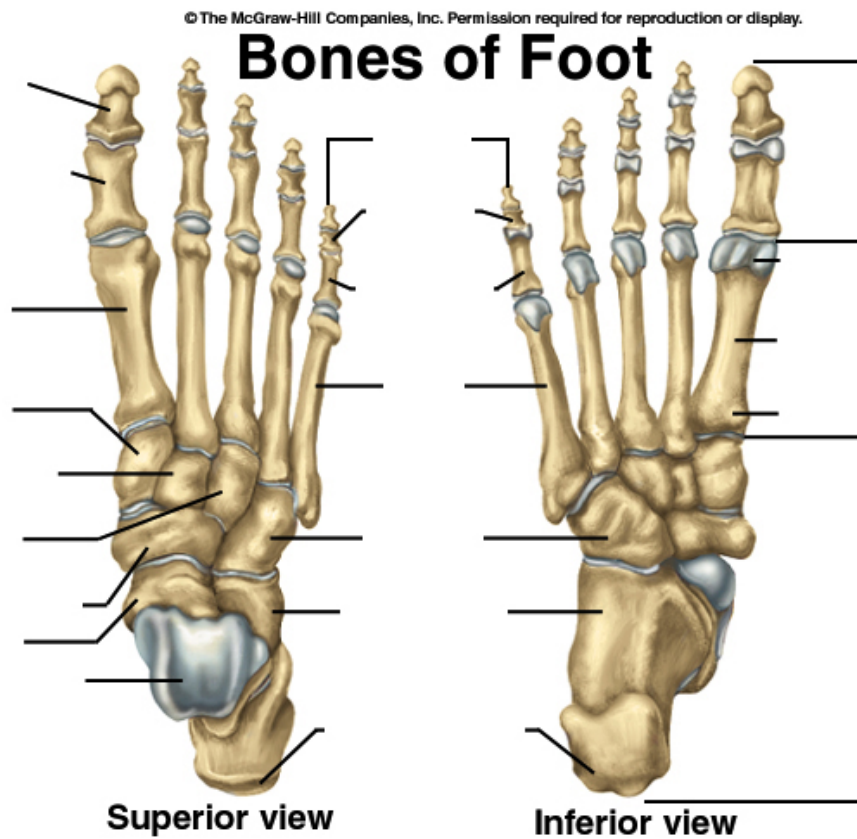


© The McGraw-Hill Companies, Inc. Permission required for reproduction or display.

## Patella, Tibia, and Fibula

Anterior surface      Posterior surface





### PART B

Answer these questions.

1. How to identify whether the skeleton is male or female?

2. What are the difference between Cervical, Thoracic and Lumbar Vertebra?

3. What features that similar and differ between femur and humerus?