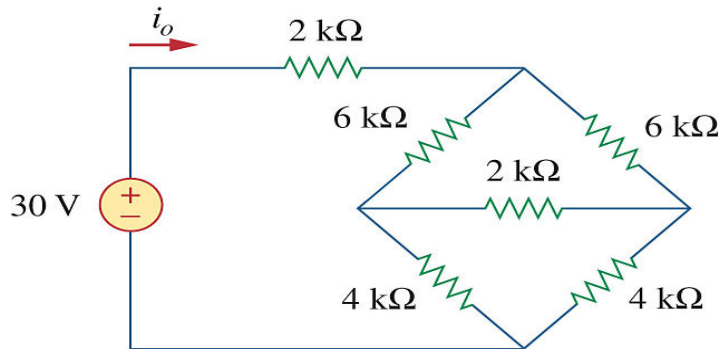
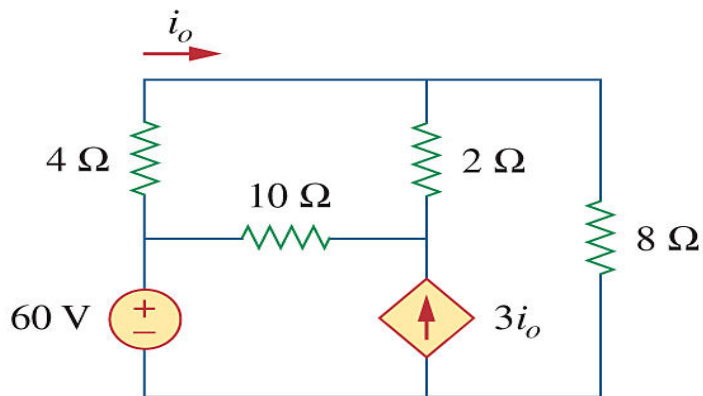


SKEE 1023 CIRCUIT THEORY
SECTION 13
TUTORIAL 3: Method of Analysis

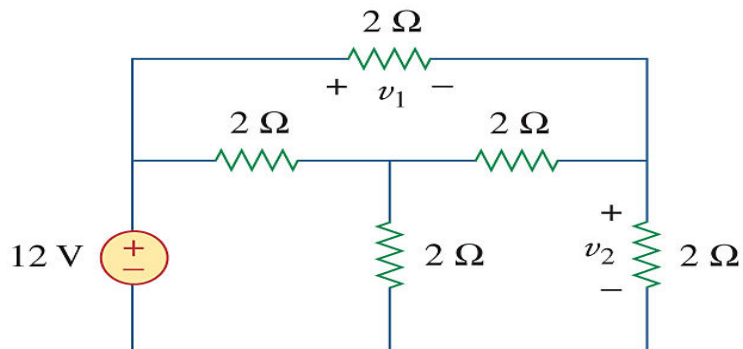
1. Problem 3.40: find i_o using mesh analysis



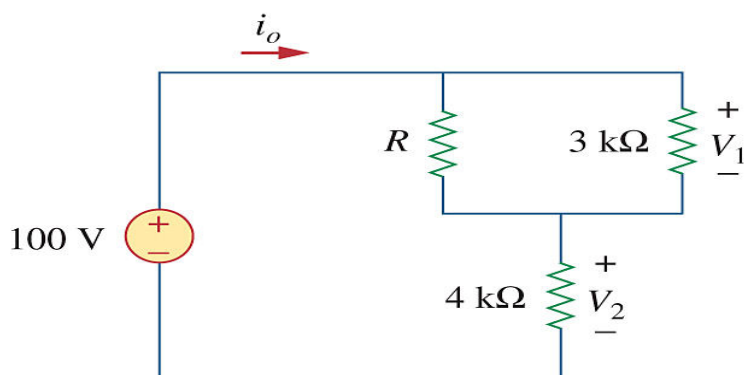
2. Problem 3.50: use mesh analysis to find current i_o



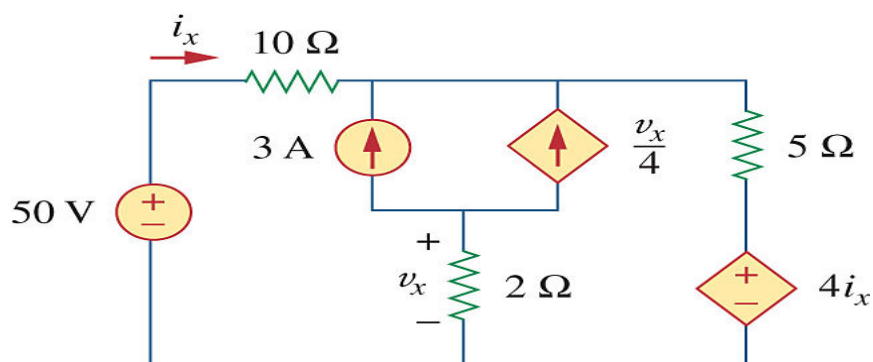
3. Problem 3.56: determine v_1 and v_2 using mesh analysis



4. Problem 3.57: find values of R , V_1 and V_2 given that $i_o = 18\text{mA}$.



5. Problem 3.63: find v_x and i_x



6. Problem 3.88: determine v_o / v_s (Assignment group C)

