



# INTERNSHIP AT ROCHE

## INDUSTRIAL SITE VISIT

THUVAARITHA SIVARAJAH / 17 JANUARY 2025

# ABOUT ME



## Thuvaaritha Sivarajah

- 4th Year Bioinformatics Student in Universiti Teknologi Malaysia
  - Roche PDIE Intern in Enterprise Engineering

# CONTENT PAGE

- 01 Introduction
- 02 Product Development, Integration & Engineering (PDIE) Chapter
- 03 Project I : Capability Framework Automation
- 04 Project II : Innovista
- 05 Technical Skills & Soft Skills
- 06 Events Participated

# INTRODUCTION TO ROCHE MALAYSIA

# Roche Malaysia Sdn. Bhd



## Company Overview

- A leading biotechnology company focusing on research-driven healthcare, providing innovative diagnostic and therapeutic solutions
- Has been present in Malaysia since 1972

## Core Businesses

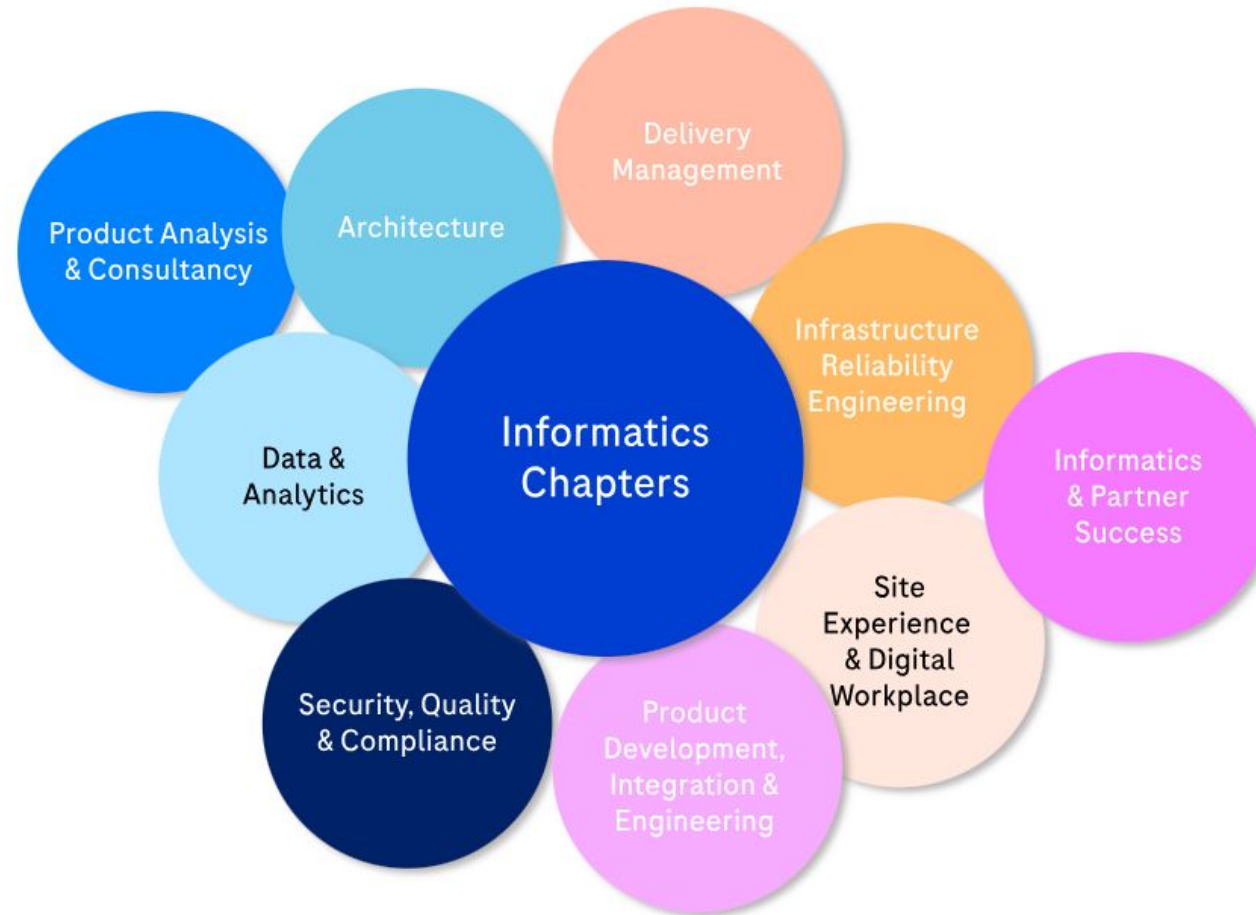
- **Pharmaceuticals** : Offers a range of medications in various therapeutic areas such as oncology, immunology, infectious diseases and neuroscience.
- **Diagnostics** : Provides advanced diagnostic tools and solutions to enhance patient care, including clinical chemistry, immunoassays, and molecular diagnostics.

## Informatics in Roche

- Integrates cutting-edge data management, computational tools, and AI technologies to accelerate drug discovery, improve patient care and advance precision medicine



# Roche Informatics Chapters



# PRODUCT DEVELOPMENT, INTEGRATION & ENGINEERING CHAPTER

# Product Development, Integration & Engineering (PDIE) Chapter

focuses on driving excellence in innovative software product development within Roche Informatics



## Chapter Overview

### Purpose:

Provides expertise in software development, integration, and technology leadership to enhance patient outcomes.

### Capabilities :

- Software Engineering
- Enterprise Engineering
- Hyper Automation & Digital Integration



## Strategic Themes

- Smart Spending
- Collaboration
- Capability Development
- People-Centric Approach
- Workforce & Sourcing
- Site Synchronization



## Structure and Reach

- 18 sections
- 2 sub-chapters
- 300 internal members
- over 1500 external members

### Global Presence :

Team members are distributed across 13 countries, with key sections in regions like Poland, Malaysia, Spain, and the United States.

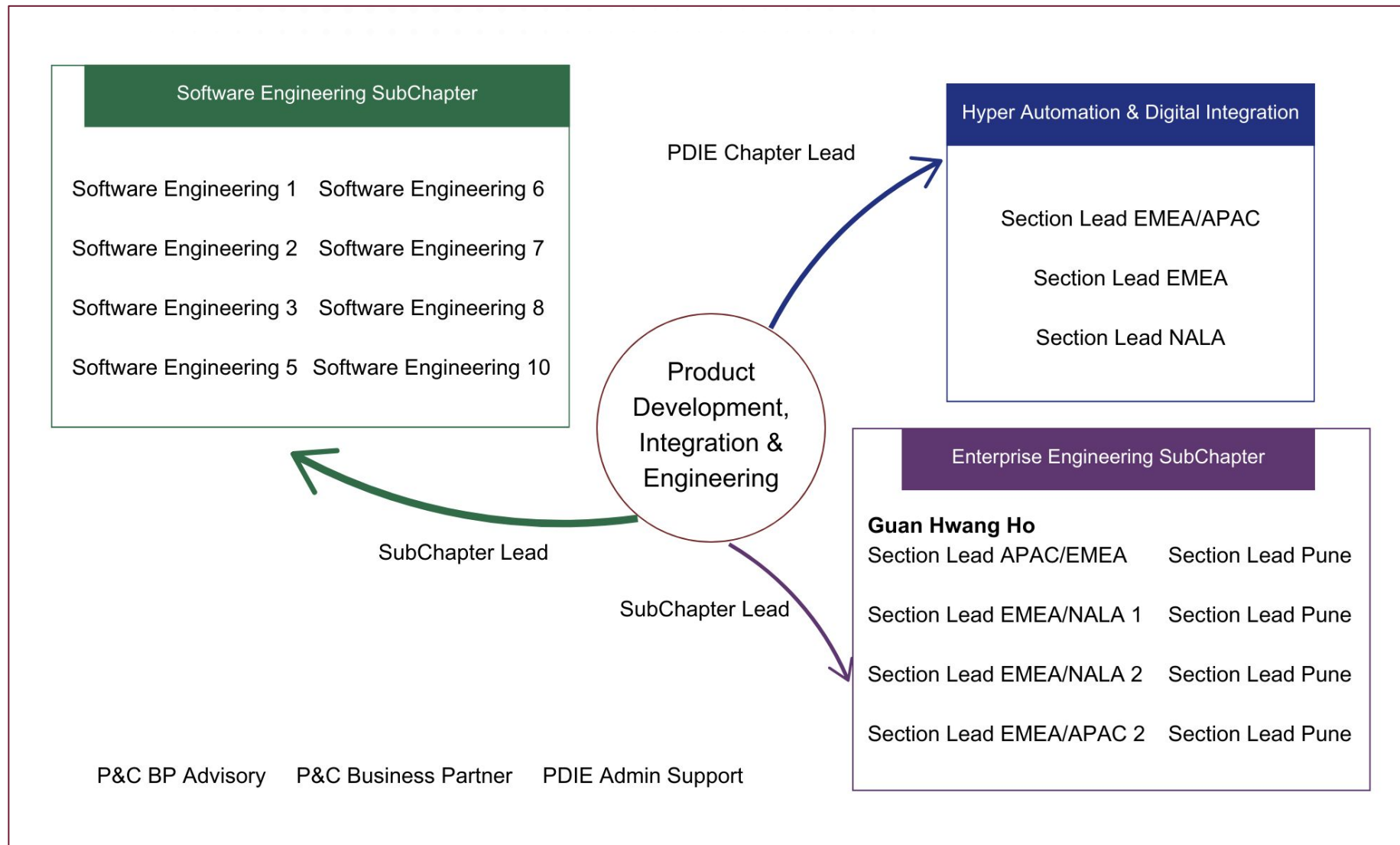


## Vision

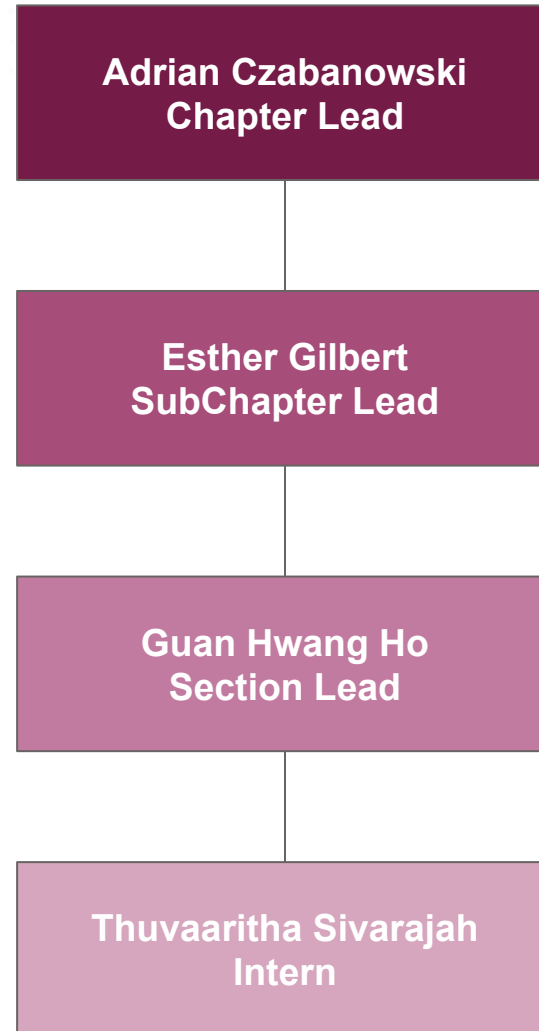
PDIE aspires to be a hub for diverse talents, cutting-edge expertise, impactful decisions, and innovative trends that contribute to Roche's mission of addressing patients' needs effectively.



# Chapter Organization Chart



# Chapter Organization Chart



# Project I : Capability Framework Automation

# Task Description



- Convert the manual capability framework from a manual google sheet to a user friendly system
- Automated template of Position Skill Matrix using Capability Framework
- Include search functions for users to make it easier for them to obtain information
- Create a dashboard for an overview and overall skill stacking

# Capability Framework Automation

COPY RSS Capability Framework 2.0- CAP Partner MASTER DECK - Automation for Yeng/Thuva							
File Edit View Insert Format Data Tools Extensions Help							
Q Menu 100% 123 Roche... 10 + B I T A							
F10							
	A	B	C	D	E	F	G
12	Framework Layer	Capability Theme	Capability	Definition: Capability	Skills/Knowledge	Definition: Skill/Knowledge	Available Solutions
13	Our Roche Foundations	Roche Fundamentals	Roche Business Acumen	You connect your role to our Roche Framework aligned to our 10 year ambitions. You have an understanding of our Roche products, services, and solution that enables you connect to our purpose: doing now what patients need next.	Roche Framework	You understand and can articulate our Roche purpose, values, and 10-Year Ambitions. Your actions reflect our Roche Values, and behaviours align with the 8 Roche Operating Principles (ROPs) in your daily work.	Roche Framework GSite / ROPs / Roche Values Training (Budapest only)
14	Our Roche Foundations	Roche Fundamentals	Roche Business Acumen	You connect your role to our Roche Framework aligned to our 10 year ambitions. You have an understanding of our Roche products, services, and solution that enables you connect to our purpose: doing now what patients need next.	Overview of Roche products, services, and solutions	You have a high-level understanding of the different products, services, and solutions we offer at Roche. You understand how our products contribute to the Roche 10-year ambitions.	Roche products services and solution Roche Finance Transferable Skills: Business Acumen
15	Our Roche Foundations	Roche Fundamentals	Roche Culture	You contribute positively and in line with our Roche Culture, including creating an environment of diversity, equity, and inclusion.	Diversity, Equity, and Inclusion	You understand and support our Global DE&I strategy, actively contributing to building an inclusive environment at Roche. You have Intercultural Awareness and consider cultural differences. You create an environment of Psychological Safety and promote a supportive work culture where team members feel empowered to speak up and take risks, knowing they have each other's support.	Global DE&I G-Site DE&I Learning Journey Inclusion capsules - working across cultures Psychological Safety G-Site House of Psychological Safety Global P&OG DE&I Portfolios
16	Our Roche Foundations	Leadership	Leadership at Roche	You are acting as a creative leader, being aware of when to lean into the VACC leader behaviors or managerial roles as appropriate for those you lead with or without reporting lines.	Roche Leadership Framework	You develop your understanding of leadership at Roche and gain more clarity on expectations of Roche leaders. You are aware of the leadership needed in transformations to create a positive impact for yourself, your teams, the organization and patients. You understand where you are as a leader and start acting in line with the leadership expectations at Roche.	Understanding Leadership at Roche Applying our Leadership Framework
17	Our Roche Foundations	Leadership	Manage People	You deliver on the Leadership Commitments and confidently apply people practices to co-create an excellent employee experience and growth. You regularly ask for feedback, reflect and act upon it. You provide relevant feedback in an appropriate way and master challenging conversations with confidence and with a helpful outcome.	People Practices	You will learn what is expected from you as People Leader at Roche (find, develop, recognize and reward people & build our organisation).	Applying Roche People Practices
+ Intro to Cap Framework Audit: Skill Focus 2025 Impact Analysis 3 years Roadmap Overview Our Roche Foundations Finance Core Capabilities Our RSS Sheet52 Financial							

Copy of RSS Position-Skill Matrix - MASTER TEMPLATE (2024) (Yeng/Thuva Copy)												
File Edit View Insert Format Data Tools Extensions Help												
Q Menu 100% 123 Roche... 10 + B I T A												
A1	PSM Template 2024											
1	A	B	C	D	E	F	G	H	I	J	K	L
2	PSM Template 2024					Chapter Lead Enterprise Capabilities - All Chapters	RSS Enterprise Capabilities Business Partner	Business Support & Partnering Manager - Enterprise Capabilities	Agile Coach	Organizational Change Manager	Senior Organizational Change Manager	Change/Comms Spec
3					Business Line/ EXE BPM/ Enabler/Sub Units	Enterprise Capabilities	Enterprise Capabilities	Enterprise Capabilities Only to be mapped at a later stage	Enterprise Capabilities - Methodology Coaching	Enterprise Capabilities - OCM	Enterprise Capabilities - OCM	Enterprise Capabilities Transformation & Pro Communications
4	Cautions:	The RSS Functional Layer is formulated, so please do not delete it. If you accidentally delete it, just use the undo feature.			Mapping/Partner	Abby / Thomas	Abby / Thomas	Complete	Zoltan / Markus	Zoltan / Abby	Zoltan / Abby	Zoltan / Sabrina / Abt
5		Missing Skills/Capabilities (e.g. What else do you need in the position?)			RSS Academy Career Journey relevant	Yes	Yes	No	Yes	Yes	Yes	Yes
6		Is Roche Finance Foundations Layer applicable the position?			Last Review Date	11/6/2024	11/6/2024	11/6/2024	11/6/2024	11/6/2024	11/6/2024	11/6/2024
7		Position Type			People Manager	Specialist/Expert & Lead	Specialist/Expert & Lead	Specialist/Expert & Lead	Specialist/Expert & Lead	Specialist/Expert & Lead	Specialist/Expert & Lead	Specialist/Expert
8	Capability Theme	Capability	Definition: Capability	Skills/Knowledge	Definition: Skill	Chapter Lead Enterprise Capabilities - All Chapters	RSS Enterprise Capabilities Business Partner	Business Support & Partnering Manager - Enterprise Capabilities	Agile Coach	Organizational Change Manager	Senior Organizational Change Manager	Change/Comms Spec
9	Pre-mapped (Our Roche Foundations & Our RSS Mapping) - Refer to Guidelines Proficiency for Our Roche/Our RSS											
10	RSS Functional Layer											
11	Analytics & Intelligence (AAI)	Analytics & Intelligence	You leverage Roche's platforms to deliver high-value projects, streamlining processes and embedding new technologies. As an expert, you turn data into actionable insights that drive decisions in finance, procurement, healthcare, and life sciences. By providing both qualitative and quantitative insights, you empower stakeholders to improve efficiency, enhance customer experience, and support business growth with a data-driven foundation for decision-making.	Data Analytics	You use Data Analytics to systematically analyze datasets, uncover patterns, and support decision-making by turning raw data into meaningful insights. Along with technical analysis, you effectively present findings to stakeholders through storytelling and visualization, using storytelling to structure insights for maximum impact. This ensures data-driven recommendations align with business goals and are easily understood by decision-makers.							
12	Analytics & Intelligence (AAI)	Analytics & Intelligence	You leverage Roche's platforms to deliver high-value projects, streamlining processes and embedding new technologies. As an expert, you turn data into actionable insights that drive decisions in finance, procurement, healthcare, and life sciences. By providing both qualitative and quantitative insights, you empower stakeholders to improve efficiency, enhance customer experience, and support business growth with a data-driven foundation for decision-making.	ERP Analytics (including knowledge about ERP data & usage of ERP transactions)	You have the ability to translate business requirements provided to end users with limited technical knowledge into clear technical specifications. Additionally, you can identify operational processes that align with end support specific.							
+ Proficiency Level for Foundational Layers Quick Guide- CLICK ME! Changes Update Tab A&A Enterprise Capabilities NSS: Global Digital Hub RZR: FMA NSS: Compliance Services & Solutions Org. Enablement Strategy & Portfolio Mgmt D&P												

# Capability Framework Automation

monday work management

Home

My work

Favorites

Workspaces

Cap Framework

Basic project management

Basic Project Management

Project Plan

Project Overview

Getting Started

C

Cap Framework

Leave workspace

Recent boards

Members

Permissions

Boards and dashboards you visited recently in this workspace

Project Plan

Project Overview

Getting Started

Roche

CapabilityFramework2

HelloScreen

OurRocheFoundation

OurRSS

RSSFFunctional

Roche

CapabilityFramework2

Capability Theme	Capability	Capability Definition	Skills	Skill Definition	Available Solutions	Skill Owner	Follow Up Status	ORF Comments
Roche Leaders	Roche	You connect your role to our Roche Framework aligned to our 10 year ambitions. You have an understanding of our Roche products, services, and solution that enables you connect to our purpose: doing now what patients need next.	Roche Framework	You understand and can articulate our Roche purpose, values, and 10-Year Ambitions. Your actions reflect our Roche Values, and behaviours align with the 8 Roche Operating Principles (ROPs) in your daily work.		Felipe Stevenson	Complete	
Roche Funda	Roche	You connect your role to our Roche Framework aligned to our 10 year ambitions. You have an understanding of our Roche products, services, and solution that enables you connect to our purpose: doing now what patients need next.	Overview of Roche products, services, and solutions	You have a high-level understanding of the different products, services, and solutions we offer at Roche. You understand how our products contribute to the Roche 10-year ambitions.		Felipe Stevenson	Complete	
				You understand and support our Global DE&I strategy, actively contributing to building an inclusive environment at Roche. You have Intercultural				

Login

www.utm.my



## What Have I Learned?

- System Design and User Experience
  - Ensure user interface is intuitive and accessible to users
- Automation and Efficiency
  - Learned how to reduce manual effort through automation
- Problem Solving and Adaptability
  - Identified inefficiencies in the existing manual system and addressing them through creative solutions
  - Adhere to product owner's requests and make the necessary changes within the given time frame
- How to Use A Low-Code Platform to Develop An Application
  - Outsystems training
  - Using the Outsystems platform as the main tool to develop this system

## Challenges I Have Faced

- Using Outsystems to develop the application
- Time constraint
- Adhering to the requirements
- Integrating a search function
- Figuring out how to combine the capability framework and position skill matrix into one page

# Project II : Innovista

# Task Description



**UI/UX Designer:** Craft an intuitive and visually appealing design mockup for the entire website using Figma, ensuring that the layout is user-centric and aligns with modern design principles



**Front-end Developer:** Build and refine the web homepage to make it engaging, interactive, and easy to navigate



**Content Creator:** Leverage SYNTHESIA to produce high-quality videos that effectively communicate the intended message, ensuring the content is engaging, professional, and tailored to resonate with the employees and visitors.

monday work management

HomeMy workFavoritesWorkspacesIntern ProjectGoalsProject Sprints/DeliverablesUser StoriesUser Story BoardUser StorySupporting DocumentsInformatics AnalogyDevelopment DocDesign DocumentBoard Workflow

Intern Project

Recent boardsMembersPermissions

Supporting DocumentsDevelopment DocDesign DocumentBoard WorkflowInformatics Analogy

Leave workspace

Help

WorkspacesIntern ProjectMinutes MeetingCatch-Up MoMDaily Stand-Up MoMProjects BacklogGoalsProject Sprints/DeliverablesUser StoriesUser Story BoardUser StorySupporting DocumentsInformatics AnalogyDevelopment Doc

New task

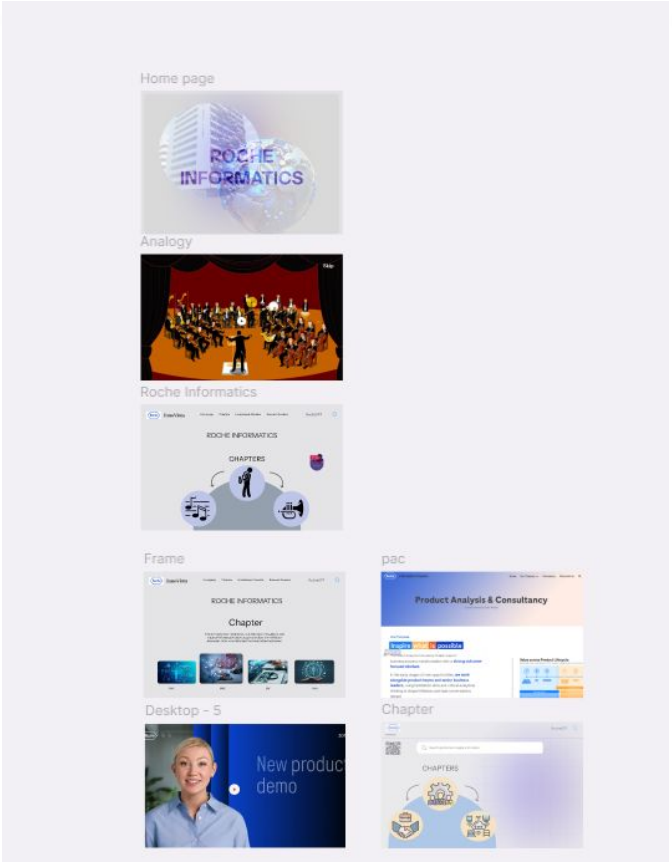
SearchPersonFilterSortHideGroup by

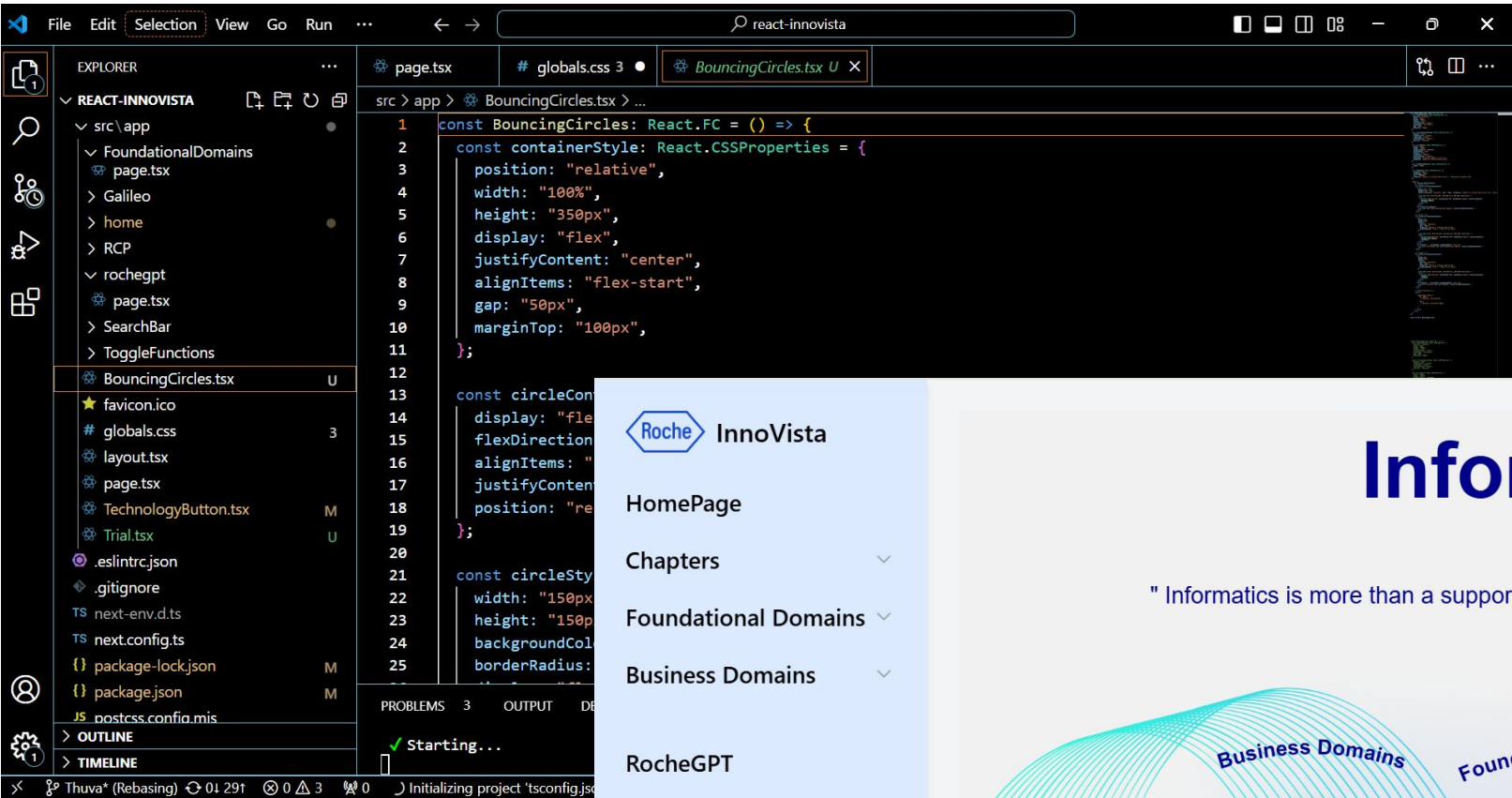
EPIC SHOWCASE


	Task	Owner	Assign to	Status	Duration	Timeline	Priority	Link	Completion Date
<input type="checkbox"/>	Script Preparation (Slide)		+2	Done	14 days	Dec 17, '24 - J...	Critical		
<input type="checkbox"/>	Script Developers (Demo)		+4	Done	14 days	Dec 17, '24 - J...	High	InnoVista Site	
<input type="checkbox"/>	Touch screen video		+2	Done	14 days	Dec 17, '24 - J...	High		
<input type="checkbox"/>	Data analysis			Done	14 days	Dec 17, '24 - J...	High		
<input type="checkbox"/>	Pitch Training (Dry run)		+7	Done	14 days	Dec 17, '24 - J...	Critical		
<input type="checkbox"/>	Flow Planning (The presentati...		+2	Done	14 days	Dec 17, '24 - J...	Medium	Planning	
<input type="checkbox"/>	Website Completeness		+5	Done	14 days	Dec 17, '24 - J...	High		
<input type="checkbox"/>	+ Add task								
					14 days avg	Dec 17, '24 - J...			

EPIC SYNTHESIA VIDEO

Help





 **InnoVista**

HomePage

Chapters

Foundational Domains

Business Domains

RocheGPT

# Informatics

" Informatics is more than a supporting function. It's central to everything we do at Roche"

- Thomas Schinecker, Roche CEO

Business Domains

Foundational Domains

Chapters

Explore Our Technologies!

## What Have I Learned?

- Agile Methodology Practice
  - Used Monday.com as our project management tool and practiced some sprint planning, daily stand-ups and retrospectives at the end of every deliverable
- ReactJS for front-end development
  - Used ReactJS to develop the Innovista homepage
- Utilized GitLab to store all our codes and for merging purposes
  - no prior experience with Gitlab, learned how push and pull codes as well as code in my branch before pushing to main
- Content Creation for the website
  - Used SYNTHESIA to develop AI-generated videos for specific domains and technologie here in Roche to make understanding them easier for employees and visitors

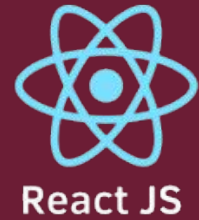
## Challenges I Have Faced

- Understanding ReactJS and how to code interactive designs
- Pushing my code to the main branch
- Figuring out how to use Synthesia in the beginning
- Ensuring everyone was on the same page and ideas were aligned
- Integration of RocheChat into our website
- Embedding the Informatics web pages into our website

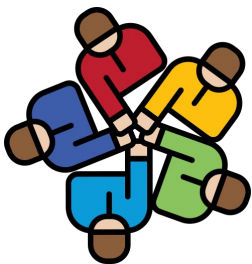


# Technical Skills & Soft Skills

# Technical Skills



# Soft Skills



Teamwork



Adaptability



Confidence



Networking

# Events Participated

# Events Participated



Let's Connect Q3/2024



Ctrl + Alt + Fun Day



Cultural Day



RSS APAC Innovation Day



# Events Participated



Lego For Scrum Workshop



Data GOVember



Internship Project Showcase



Year End Xmas Party

# THANK YOU



univteknologimalaysia



utm.my



utmofficial