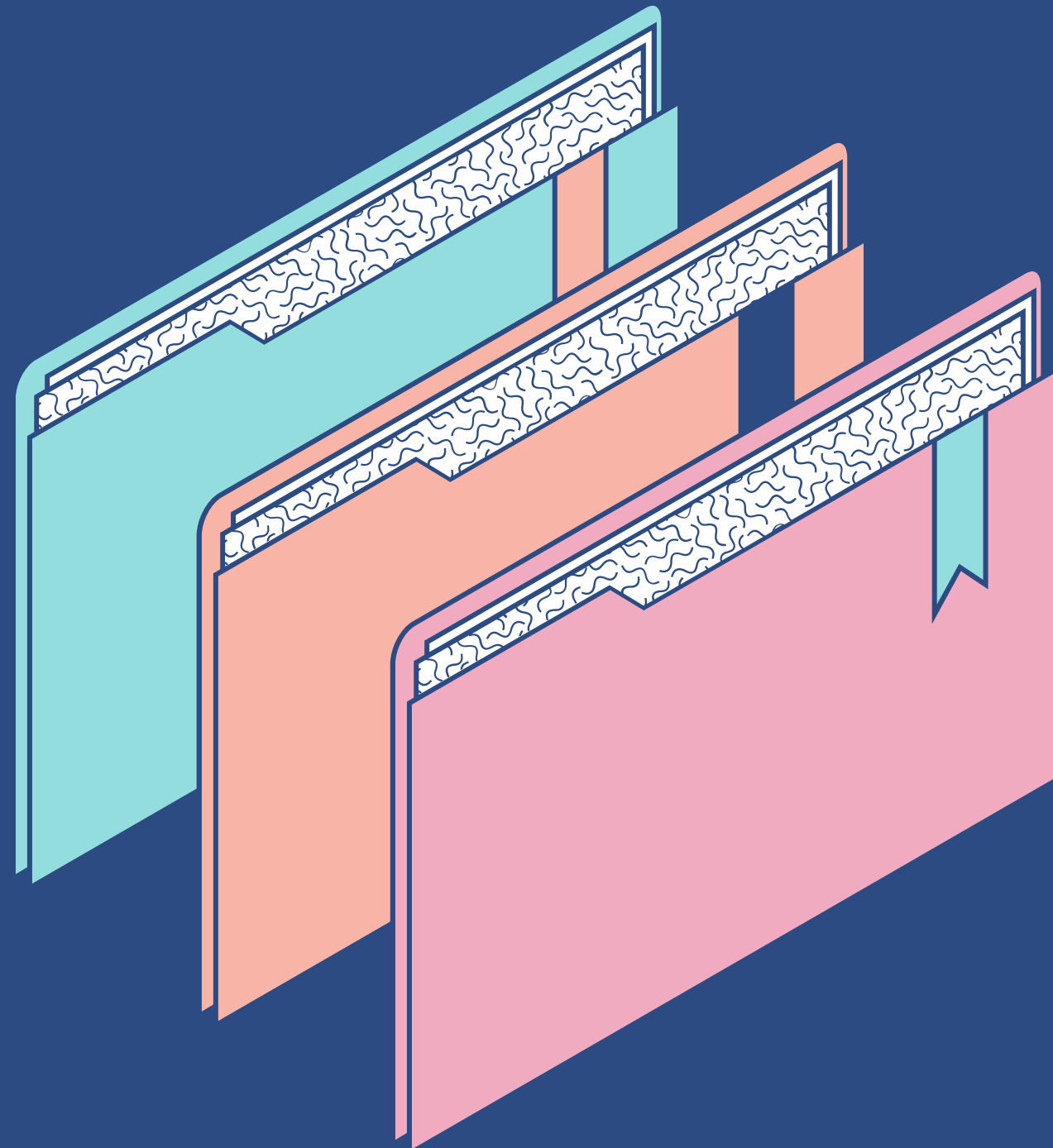


A collection of stylized, isometric illustrations on a dark blue background. At the top left is a map with orange borders and a teal grid. Below it is a stack of three books in teal, orange, and teal. To the left of the laptop is a potted plant with teal and orange leaves in an orange pot. In the center is an open laptop with a teal screen and keyboard. Above the laptop is a white Wi-Fi symbol. At the bottom right is a computer monitor with a teal screen and orange frame.

TEAM DYSON PRESENT TO YOU,

The Internet of Things (IoT)

Prepared by,
Madina Suraya Binti Zharin
Nayli Nabihah Binti Jasni
Terence Loorthanathan
Ong Han Wah



Contents

1. What is IoT?
2. How does IoT works?
3. Examples of IoT
 - Smart Home
4. Impacts
 - Pros and cons
 - IoT issues



What is IoT?

- THE INTERCONNECTION BETWEEN PHYSICAL DEVICES AND INTERNET BY COLLECTING AND SHARING DATA.
- WITH CONNECTING THESE TWO DISTINCT OBJECT AND ADD SENSORS TO THEM, IT WILL INCREASE ITS DIGITAL INTELLIGENCE TO A HIGHER LEVEL.

How does IoT work?

LETS ANSWER IT
WITH A FEW KEY
QUESTIONS.

To understand the question. Lets think of IOT implementing devices.

Modern day Smartphones, any device that has "Smart" in front of its name.

What determines the smartness of a device?

Intelligence of a device is determined similarly to how humans consider themselves intelligent.

Device needs sensors and a mini computer containing processors to be defined as smart.

Machine Learning

Machine learning helps the sensors in "Smart" devices be vigilant of the surrounding.

This does not mean your smart devices can have a conversation with you, like a human can.

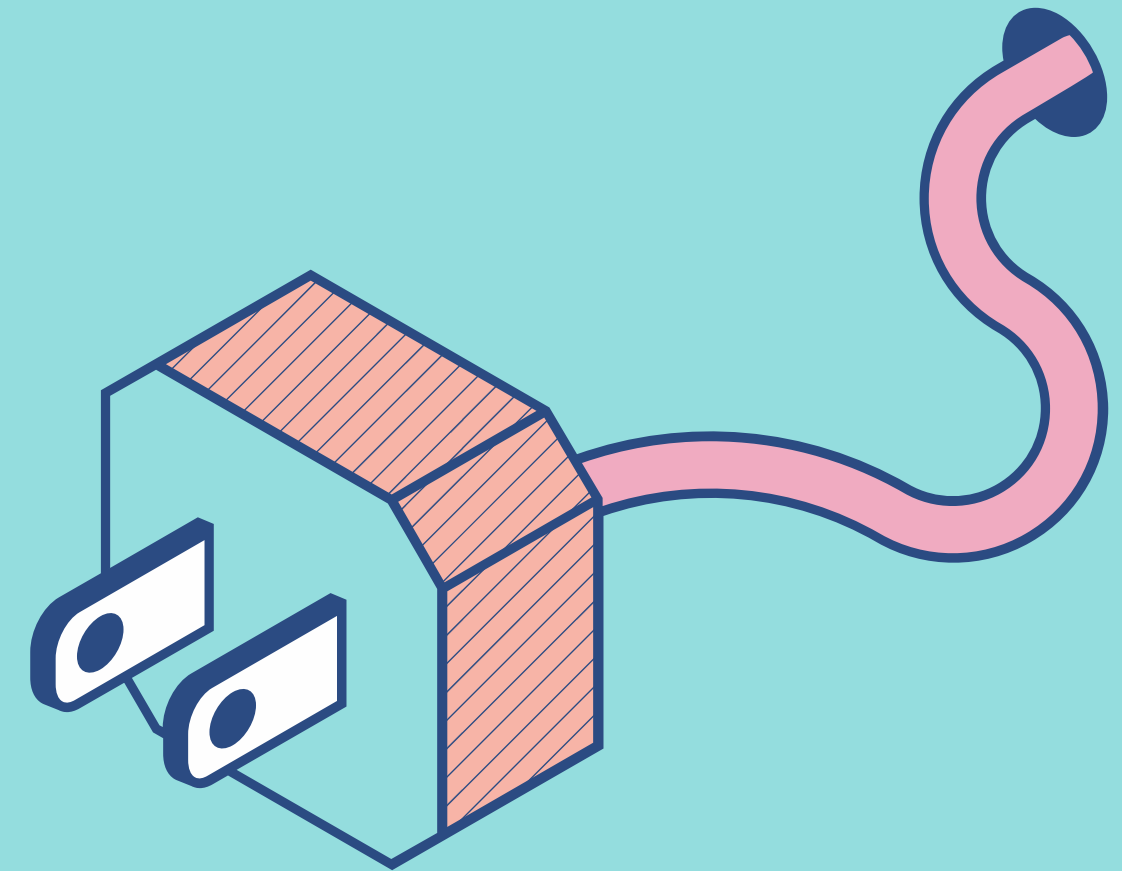
But it can help you make your everyday life a bit easier.

SMART HOME

Home appliances can be interconnected to share data with the user over a mobile application. The user could get detailed insight onto the working of devices around them. For example, the air-conditioner, doorbell, thermostat, smoke detectors, water heater and security alarm.

Example scenario:

When the alarm clock goes off, the IoT could open the window blinds and also turn on the water heater for people to take shower in the morning.



IoT Devices

GENERAL DEVICES

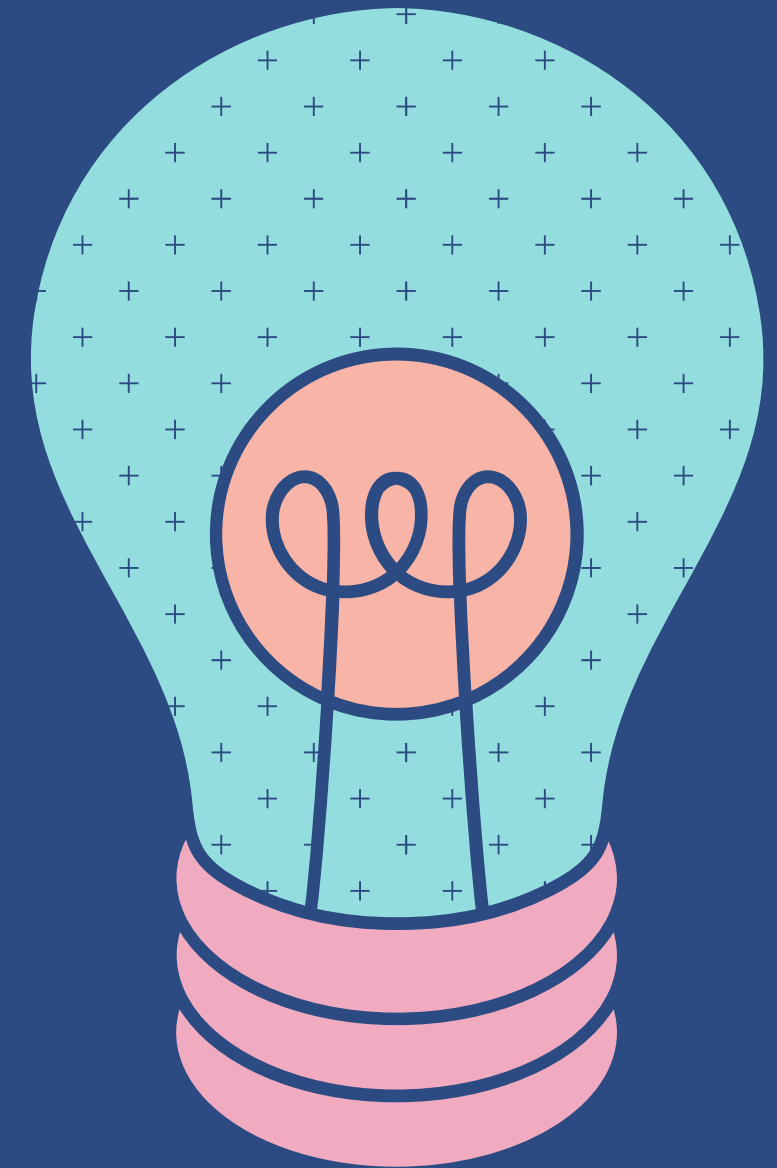
MAIN COMPONENT OF DATA HUB AND INFORMATION EXCHANGE CONNECTED EITHER WIRED OR WIRELESS. (EG. HOME APPLIANCES)

SENSING DEVICES

MEASURE TEMPERATURE, HUMADITY, LIGHT INTENSITY.

CONNECTOR

WIFI, BLUETOOTH, ETC.



HOW SMART HOME WORKS?

1

Devices
connected to the
network with the
help of
gateways.

2

Gateways
process
information
collected by
sensors

3

Information
transfer to
clouds

4

Data collected
display as
references.





PROS

- Easy access
- Automation and control
- Saves money and energy
- Increased productivity

CONS

- Complexity
- Compatibility
- Privacy and security
- Controls your life

Issues of IoT

WHAT ARE THE CONCERNS ABOUT IOT

Standards and Regulations

Different smart devices may use different wireless communication protocols due to lack of IoT standards.

Privacy

Sensitive and personal information shared by the IoT devices has obvious chance of leaking through unauthorised access.

Security

The characteristics of IoT make it vulnerable to cyber attack. If one IoT device is hacked, the whole system or even other system can be damaged.

THANK YOU

We hope you learned something new.

