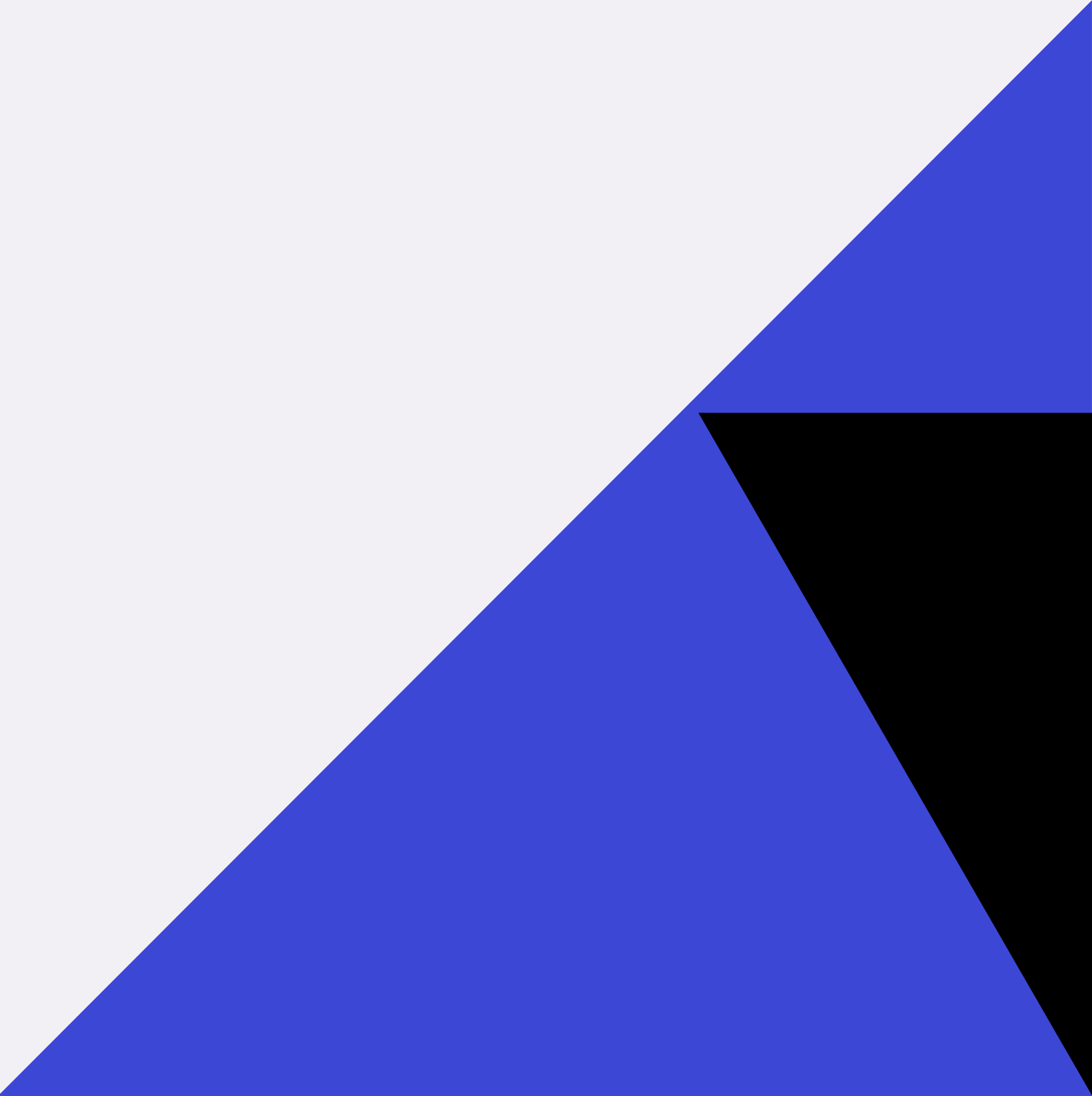




Creating People-friendly Structures

MY VISION APPLICATION

WORKSHOP OVERVIEW

- **Introduction**
 - **Detail steps and descriptions**
 - **Description of the developed low-fidelity prototype.**
- 



INTRODUCTION

- A major goal of artificial intelligence is to create systems that can function intelligently and independently by simulating the functions of the human brain.
- Our concept is a smartphone application driven by artificial intelligence for those with limited eyesight.
- The major purpose of developing this application system is to make the world accessible to low-vision people without requiring them to rely on friends and family.



INTRODUCTION

- This application employs artificial intelligence with limited memory to observe surrounding regions and directions, assisting them to "read barriers" and modify as needed, such as utilising prior observations to forecast crossing the road.



DETAIL STEPS AND DESCRIPTIONS

- PROBLEM
- SOLUTION
- TEAM WORKING

PROBLEM

During this project, we seem to have encountered several difficulties in meeting our customers' expectations, despite our best efforts to comprehend their situation and need by determining the conclusion itself. In addition, we have difficulty choosing which customers, who are either persons with impaired eyesight or those who are blind, we should concentrate our efforts on. Finally, but certainly not least, we seem to be stuck on this project as a result of a lack of knowledge regarding the project.



SOLUTION

After many talks among the group members, we were able to come up with a few solutions to the difficulty that we were experiencing over the course of this project's development. One of them is the result of extensive study on the internet, which resulted in the development of a single application system that can meet all of the criteria of our customers. Following that, we eventually chose to concentrate our efforts on those with impaired eyesight since our application system seems to be more ideal for them than it is for blind people. Finally, in order to deal with the issue of us being stuck, we approached our lecturer, Dr. Azurah, and asked her to help us to resolve our problem of being trapped on this assignment.



TEAM WORKING

In terms of teamwork, we eventually decided to allocate each person to a certain aspect of the project. For example, Nasrul is responsible for the introduction and detail description's part, Eleeya is responsible for the business part, Harchana is responsible for the detail steps and low fidelity mock-ups, and Malleylene is responsible for the AWS architecture part of the project.

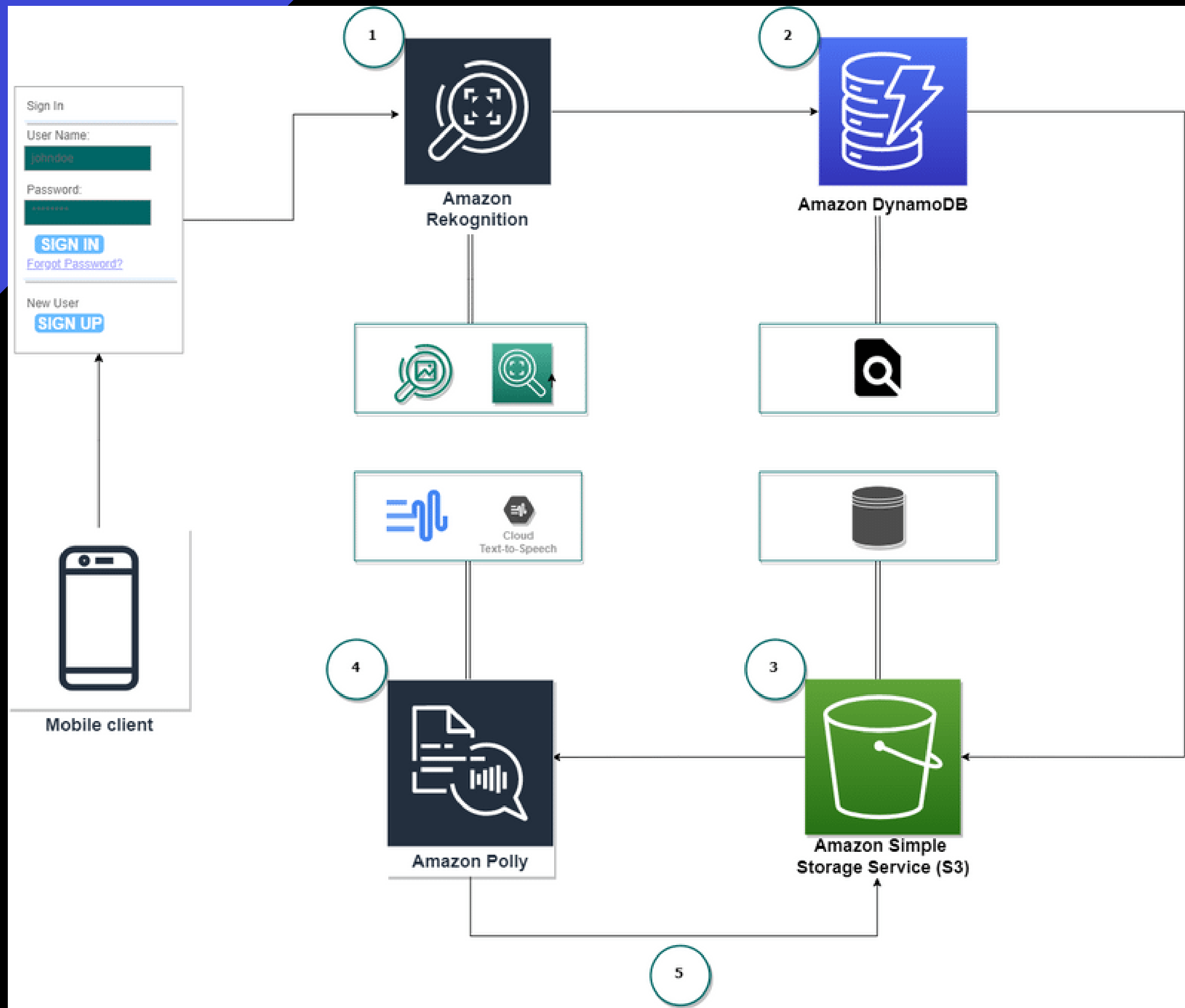


DESCRIPTION OF THE DEVELOPED LOW-FIDELITY PROTOTYPE

ONLY THEN CAN YOU CREATE TRULY INNOVATIVE SOLUTIONS.

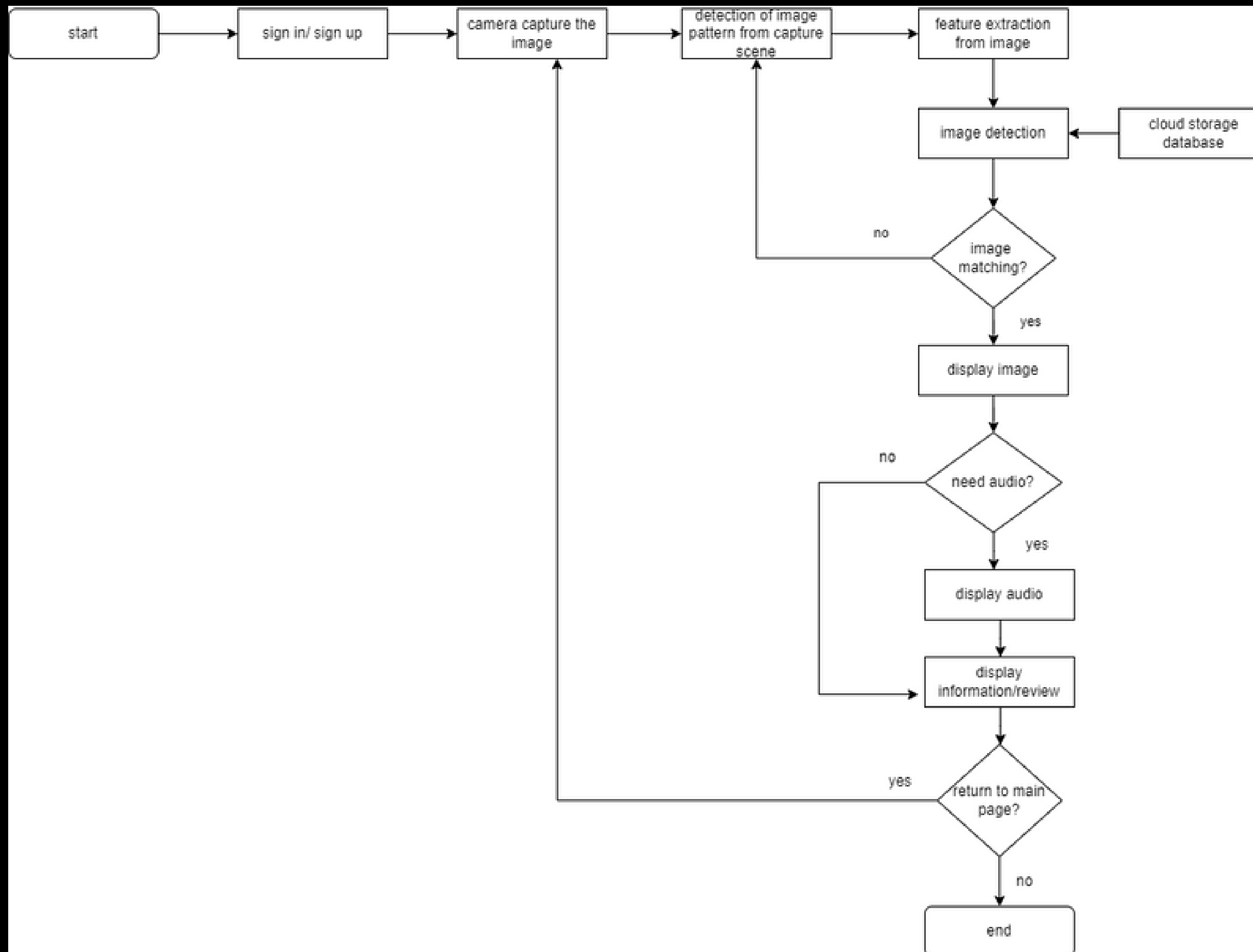
AWS ARCHITECTURE (ECOSYSTEM)

LET'S EXPLORE MORE



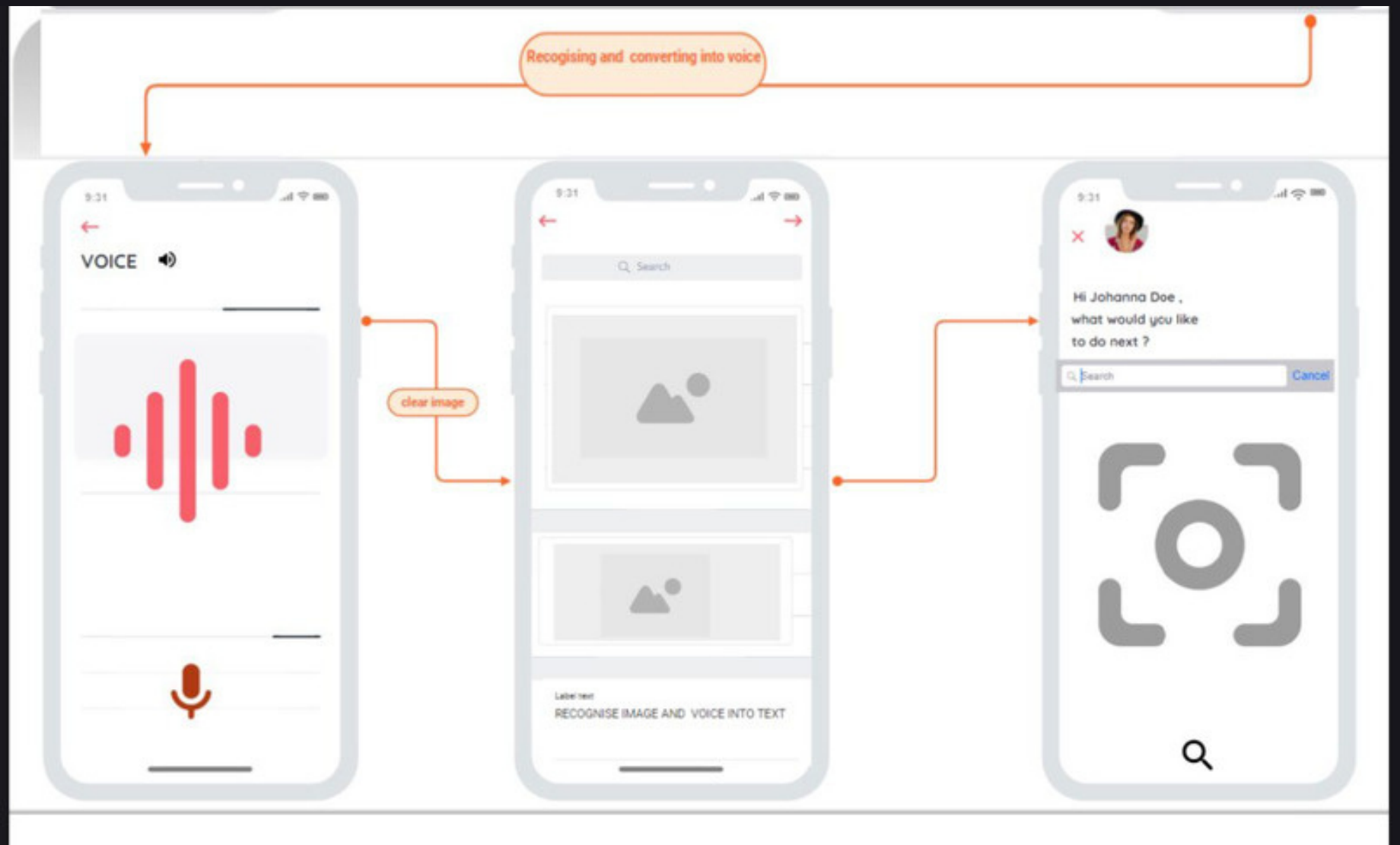
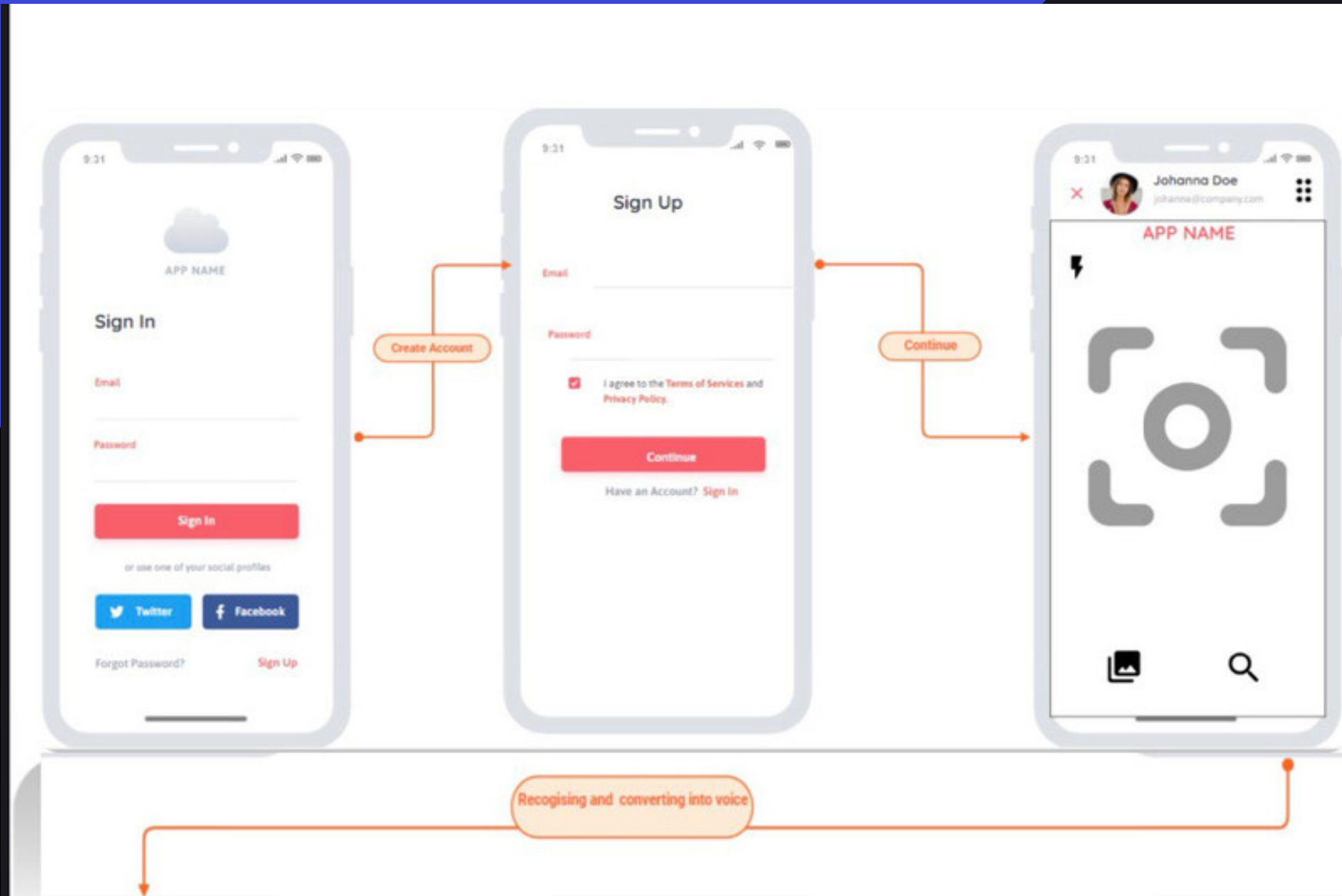
BUSINESSES PROCESS FLOW

LET'S MAKE IT WORK



LOW FIDELITY MOCK-UPS

HOW IT LOOK



THANK
YOU