

## GROUP 3



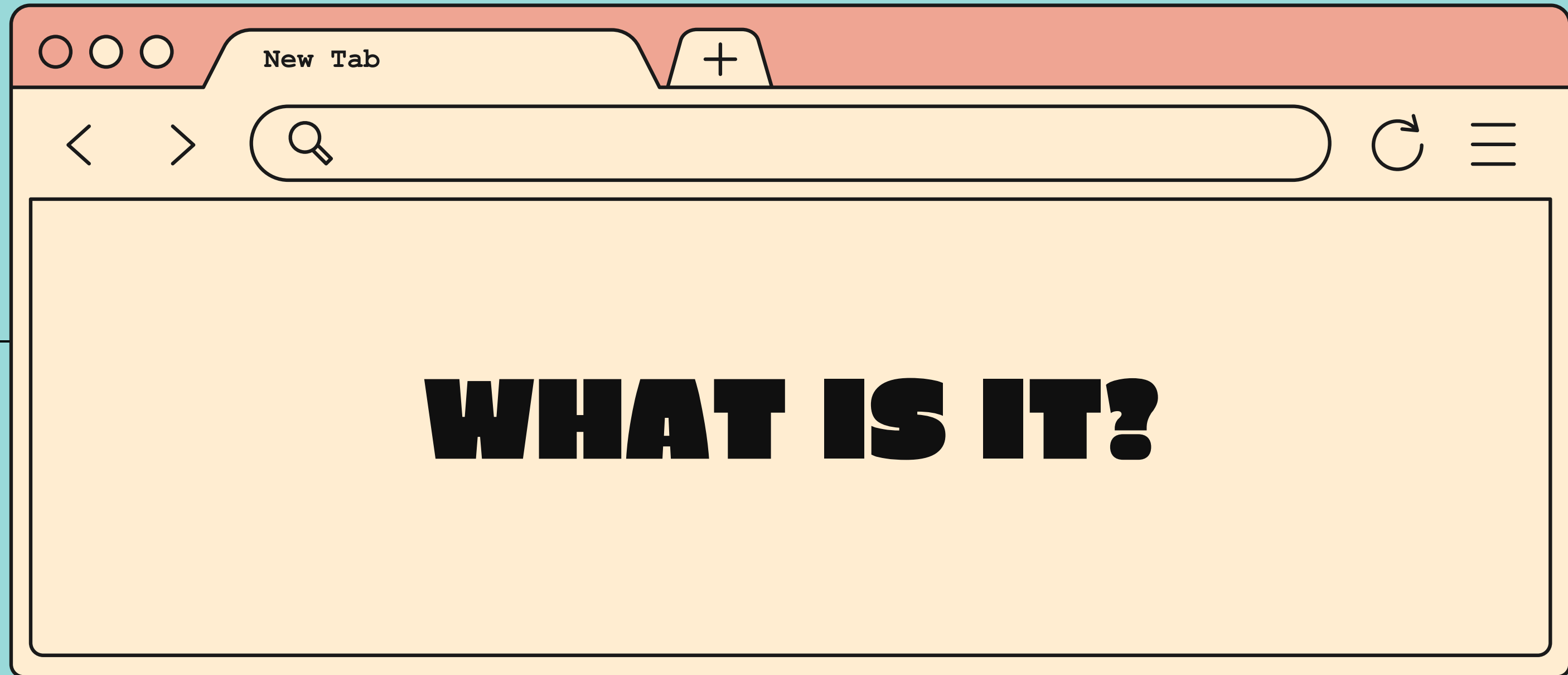
Done by: WAN MUHAMMAD AIMAN BIN WAN MUHAMAD FAISAL (A21EC0237)

MUHAMMAD THORIQ BIN KAHAIRI (A21EC0096)

MUHAMMAD FAHMI BIN ROSLEE (A21EC0285)

AFIQ FAHMI BIN ROSLAN (A21EC0153)

AARON TAN (A21EC0152)



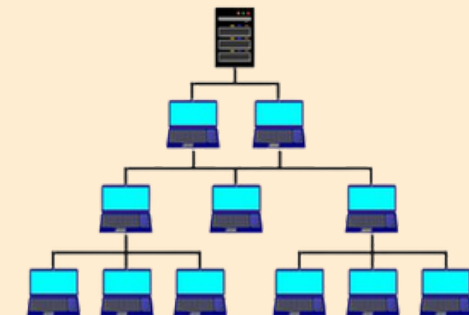
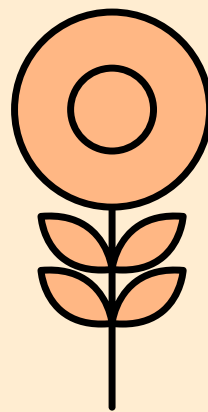
## WHAT IS IT?

### Tree Network

Awesome Web Browser

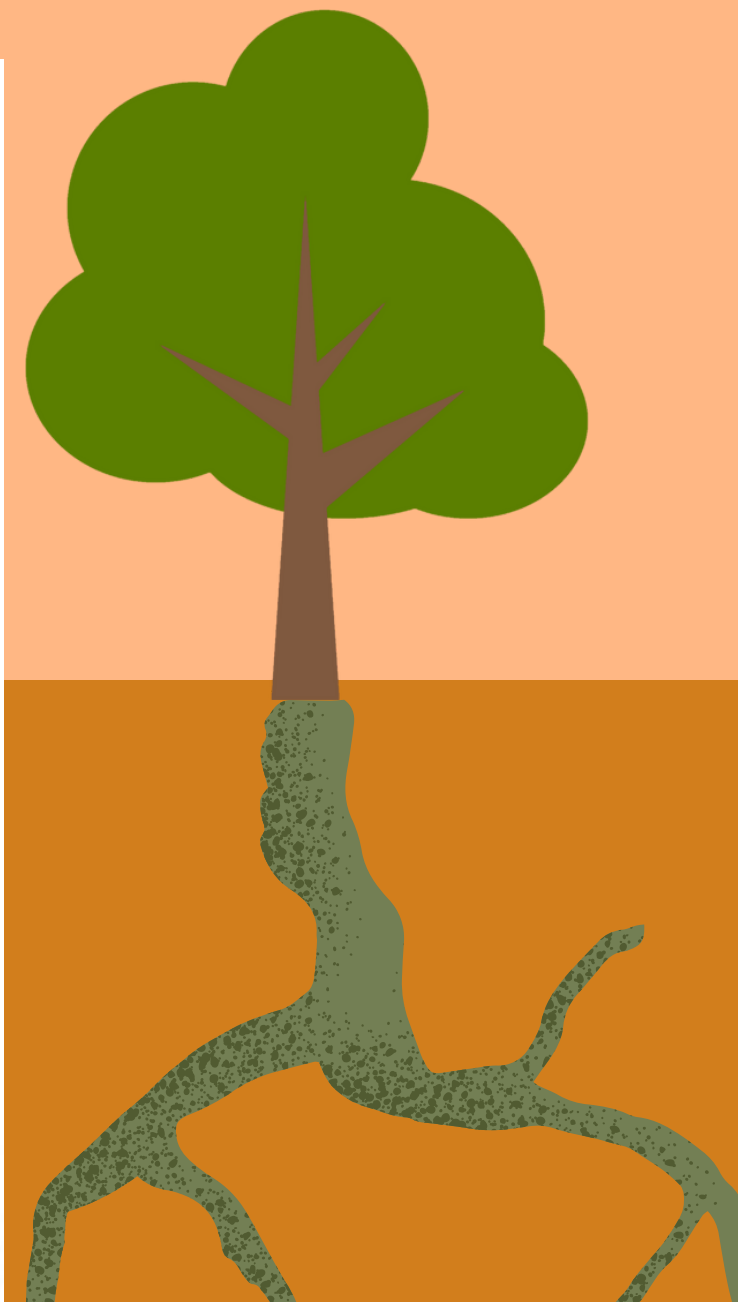
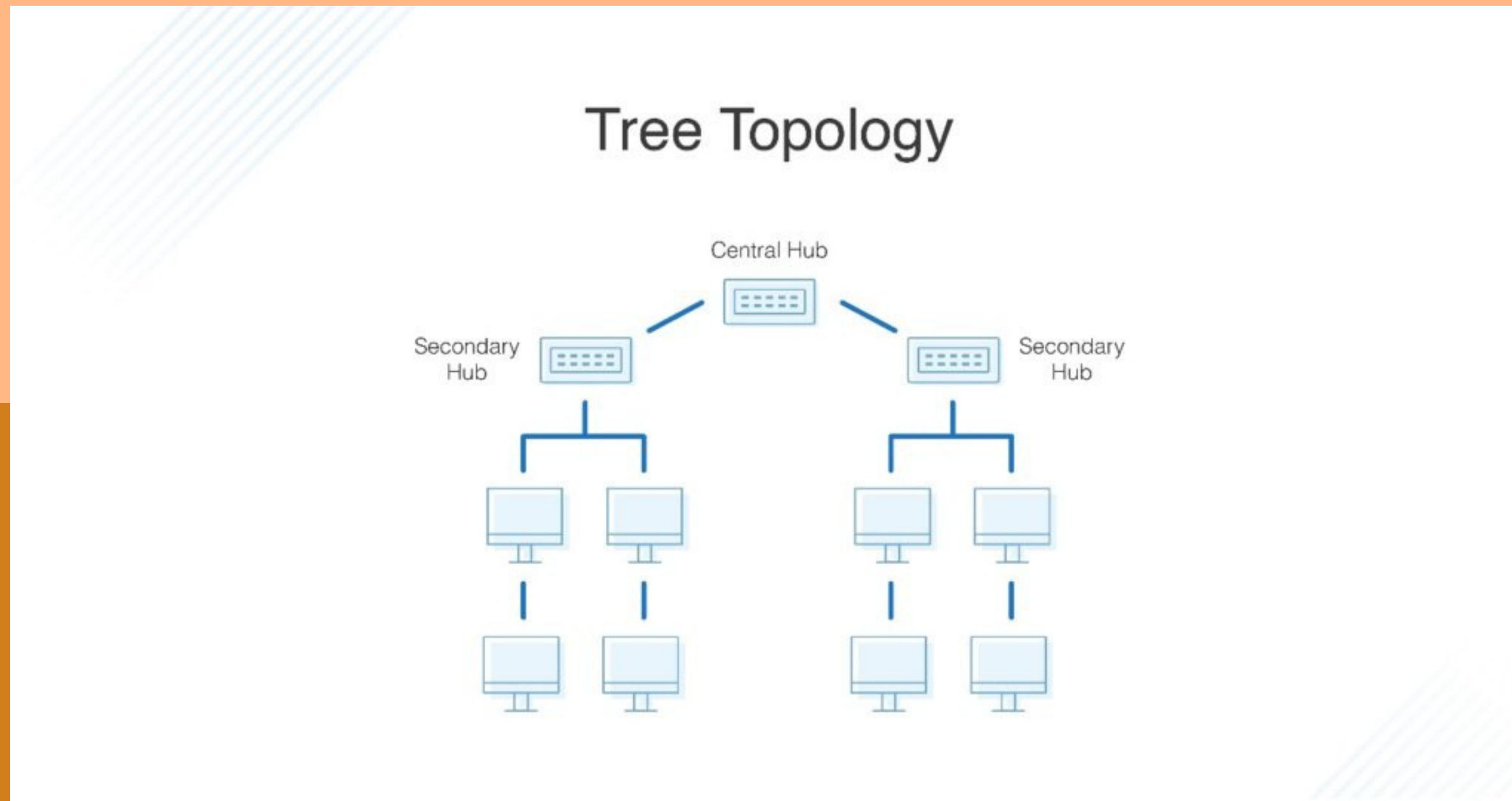


- Tree Topology is when all the computer are connected like the branches of a tree.
- Tree topology is known as a combination of a Bus and Star network topology
- Arranged in hierarchically



# TREE TOPOLOGY ARRANGEMENT

The structure as the name suggests resembles that of a tree. The central part acts like a trunk while the extensions are that of roots or branches of a tree.



# Advantages Of Tree Topology

Awesome Web Browser

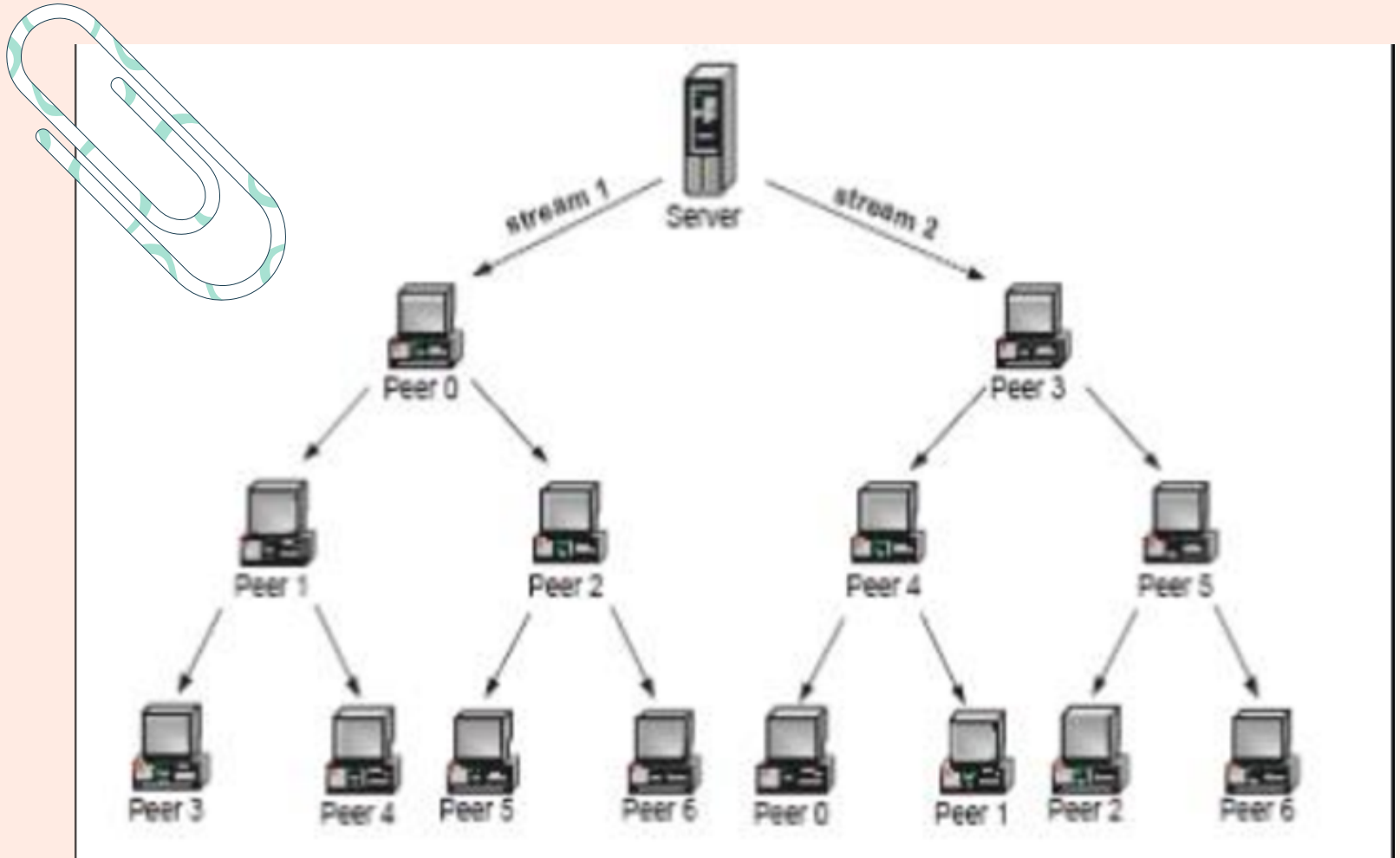
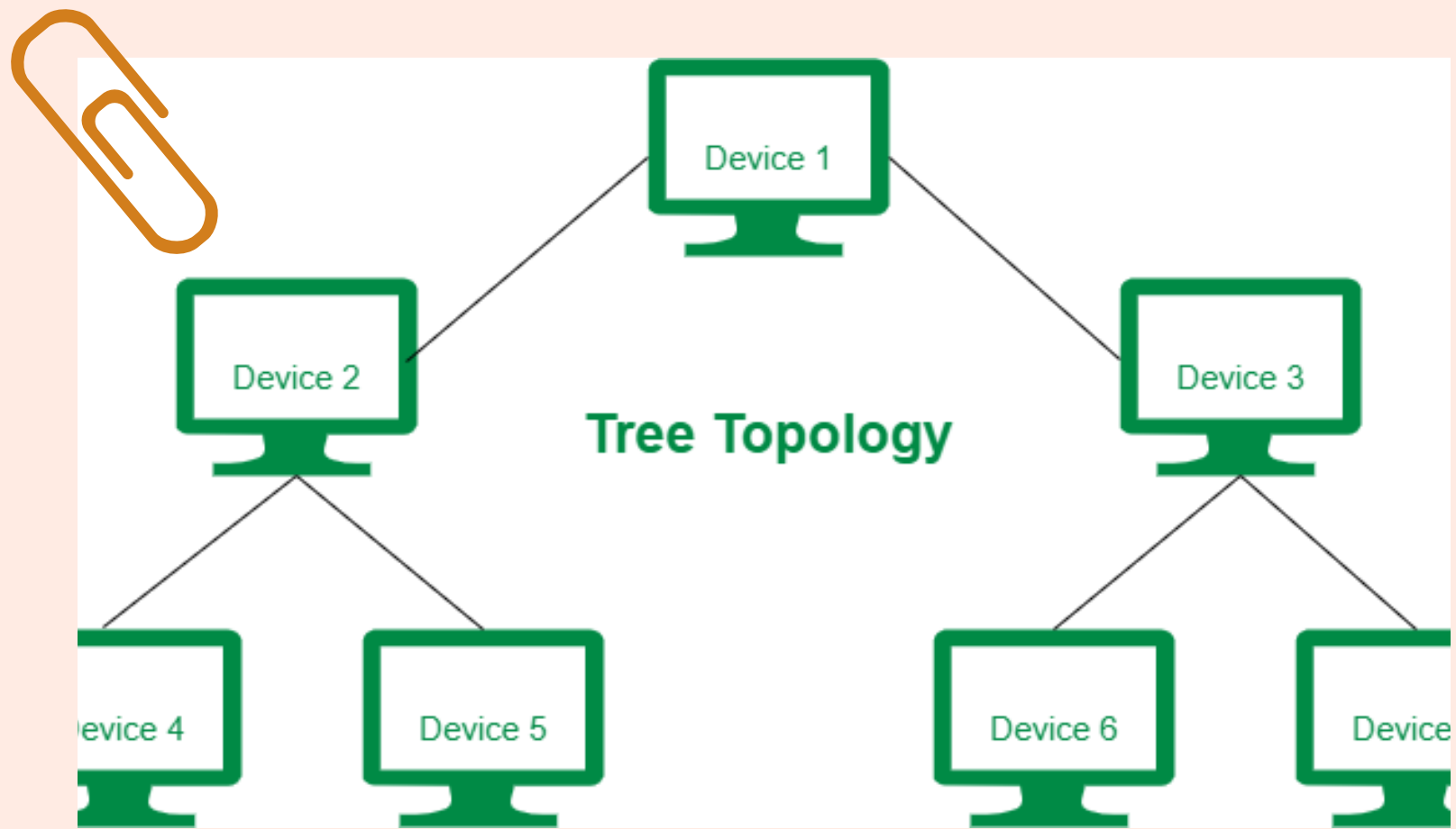


- **Failure of one node never affects the rest of the network.**
- **Node expansion is fast and easy.**
- **Detection of error is an easy process**
- **It is easy to manage and maintain**

# DISADVANTAGES OF TREE TOPOLOGY



1	<ul style="list-style-type: none"><li>• <b>Large cabling is required as compared to star and bus topology.</b></li></ul>
2	<ul style="list-style-type: none"><li>• <b>On the failure of a hub, the entire network fails.</b></li></ul>
3	<ul style="list-style-type: none"><li>• <b>If more nodes are added, then its maintenance is difficult</b></li></ul>



# conclusion

- tree topology that also known as a combination of a Bus and Star network topology is mostly used on a larger networks
- Tree network is used, to share information across the network and allow users to have many servers on the network
- It is the best topology because the signals that are transmitted by the root nodes are received by all the computers at the same time

