

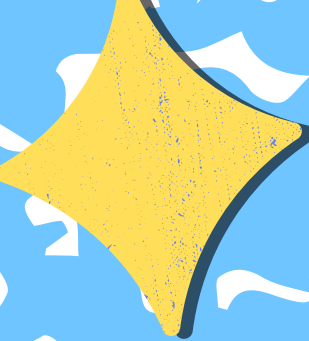
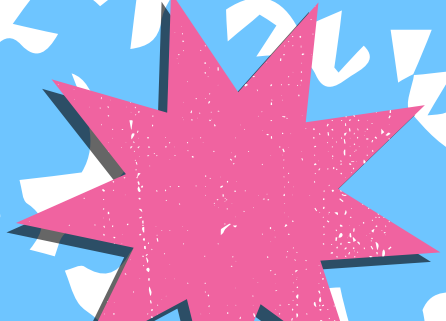
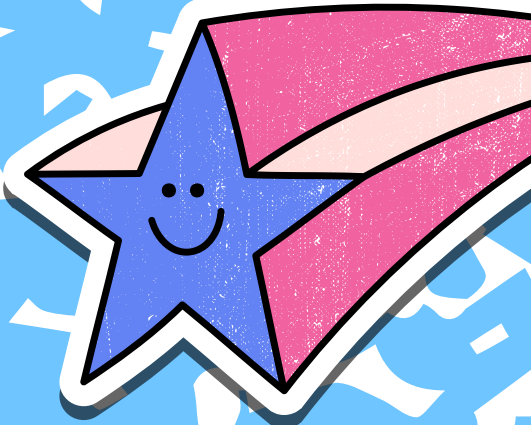
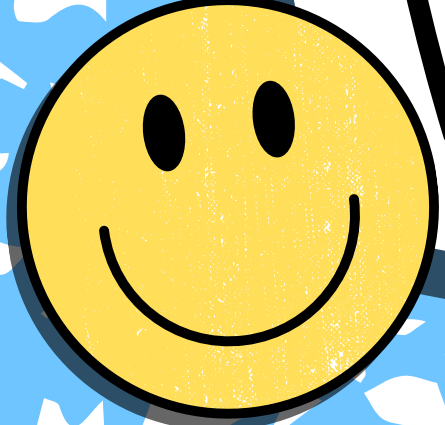
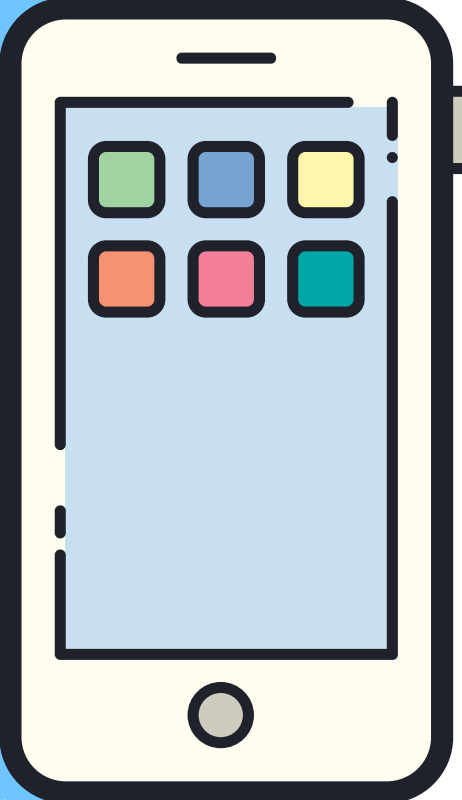
C O O L

ALERTME



Low-Fidelity Project

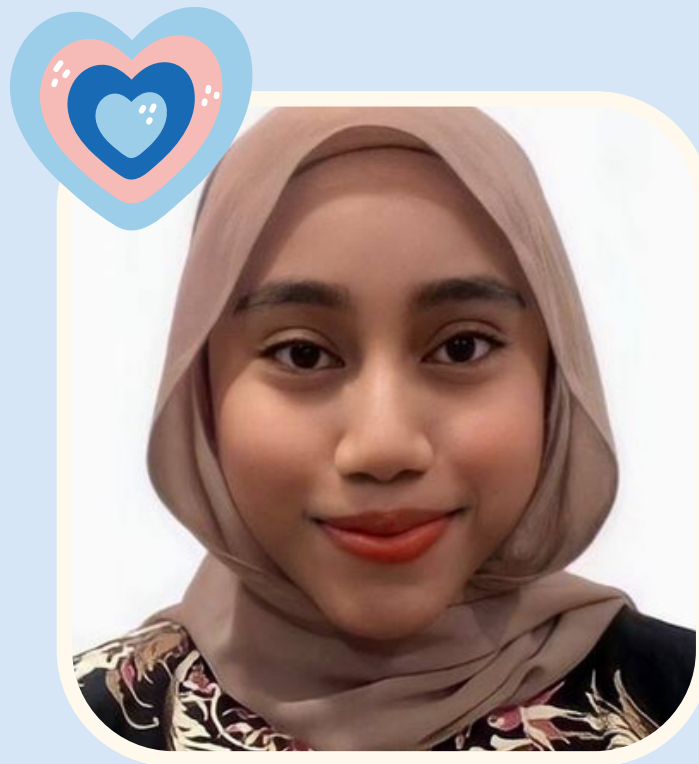
by Group 1



THE TEAM MEMBERS



JELIZA JUSTINE A/P
SEBASTIN
A21EC0034



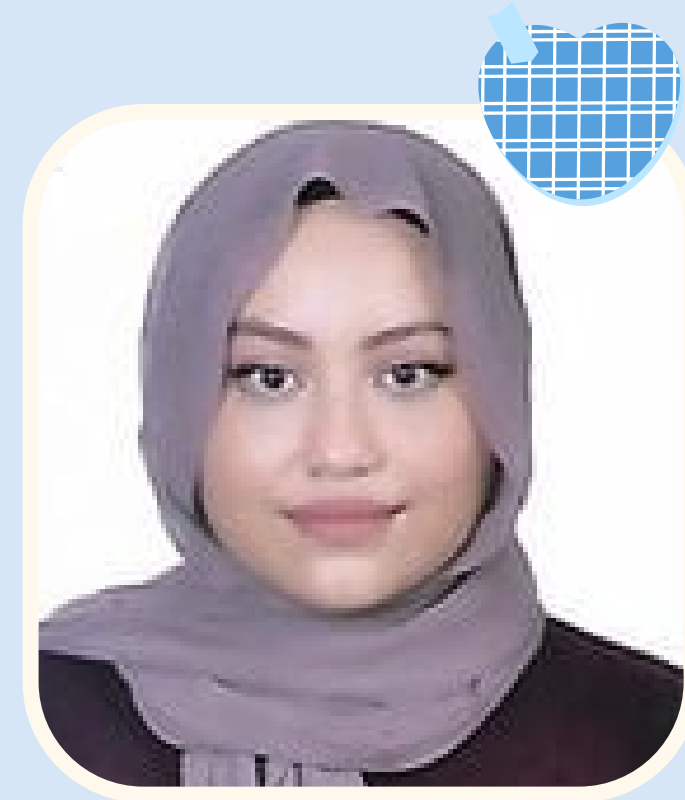
AFIQAH IZZATI
AZZEROL EFFENDI
A21EC0004



NEREA LANAI
ANAK NEOL
A21EC0100

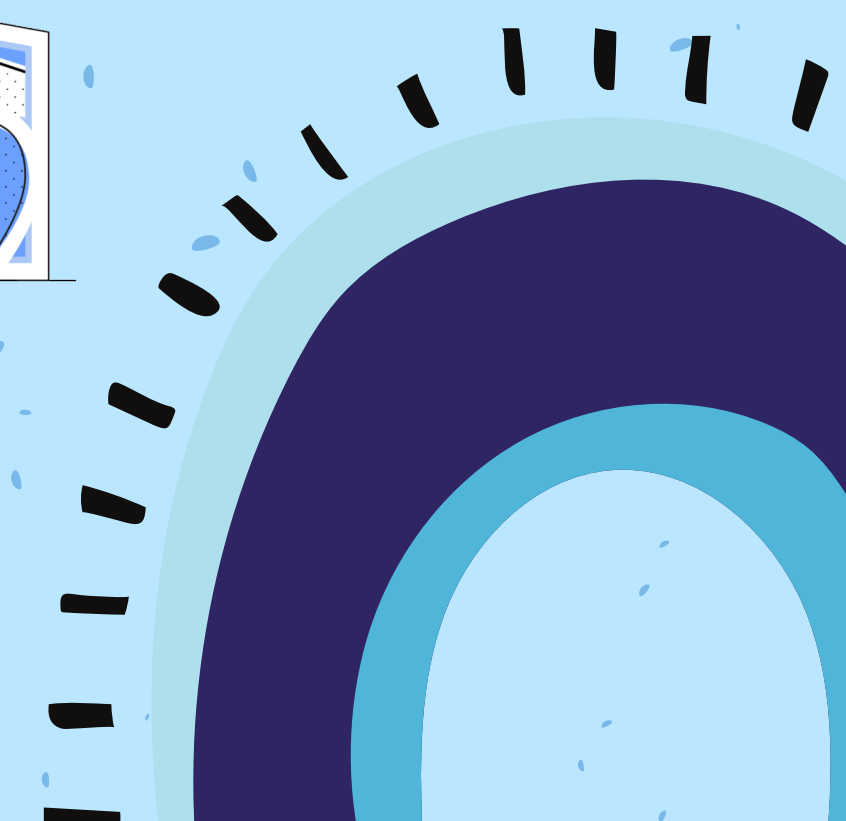
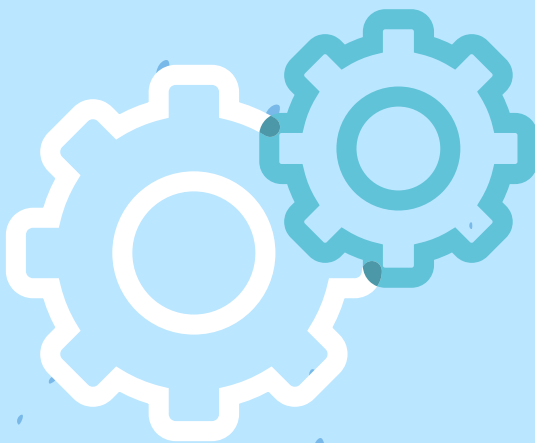
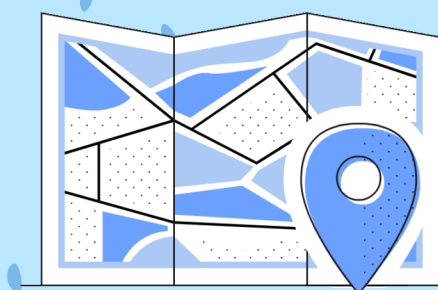
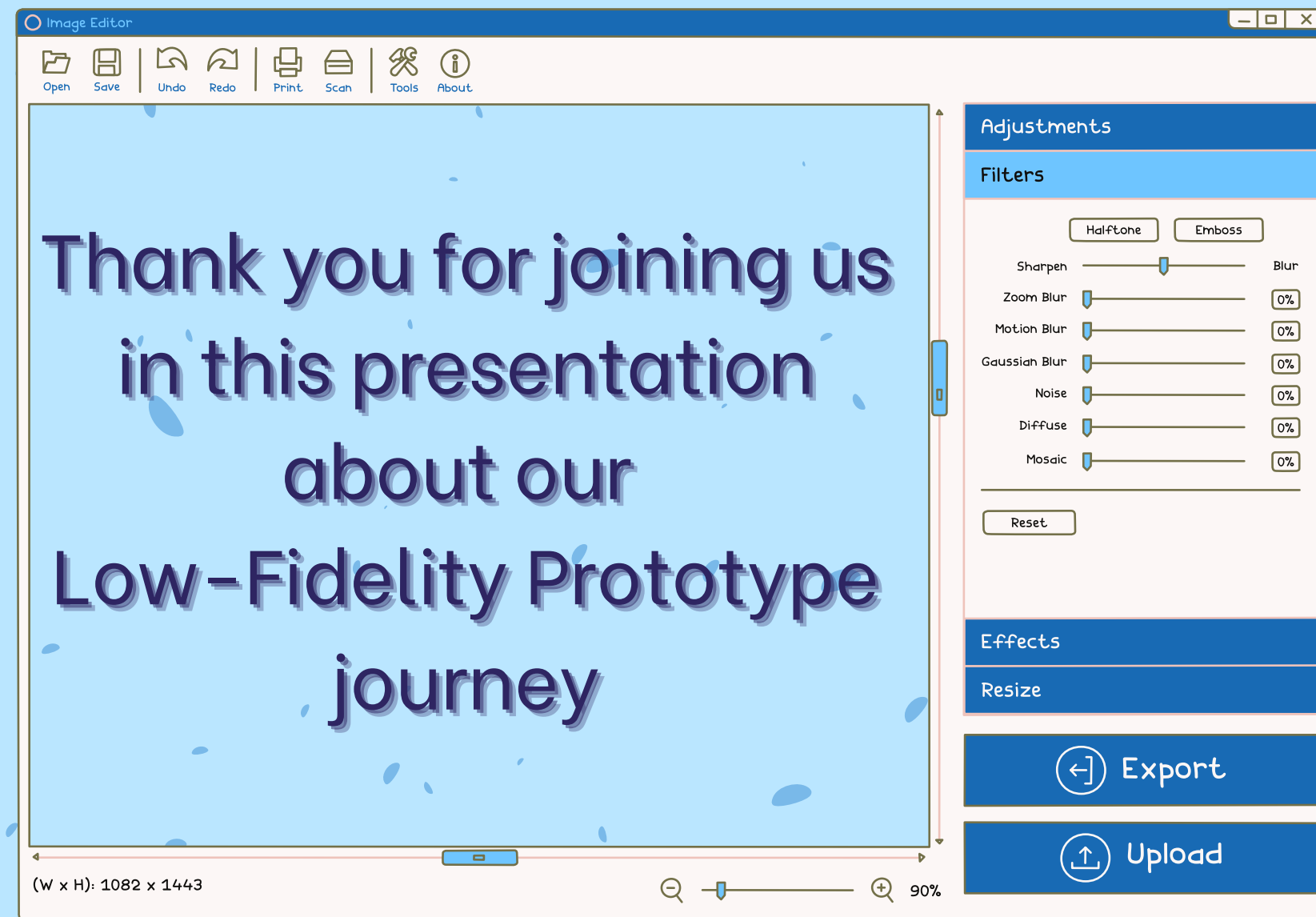
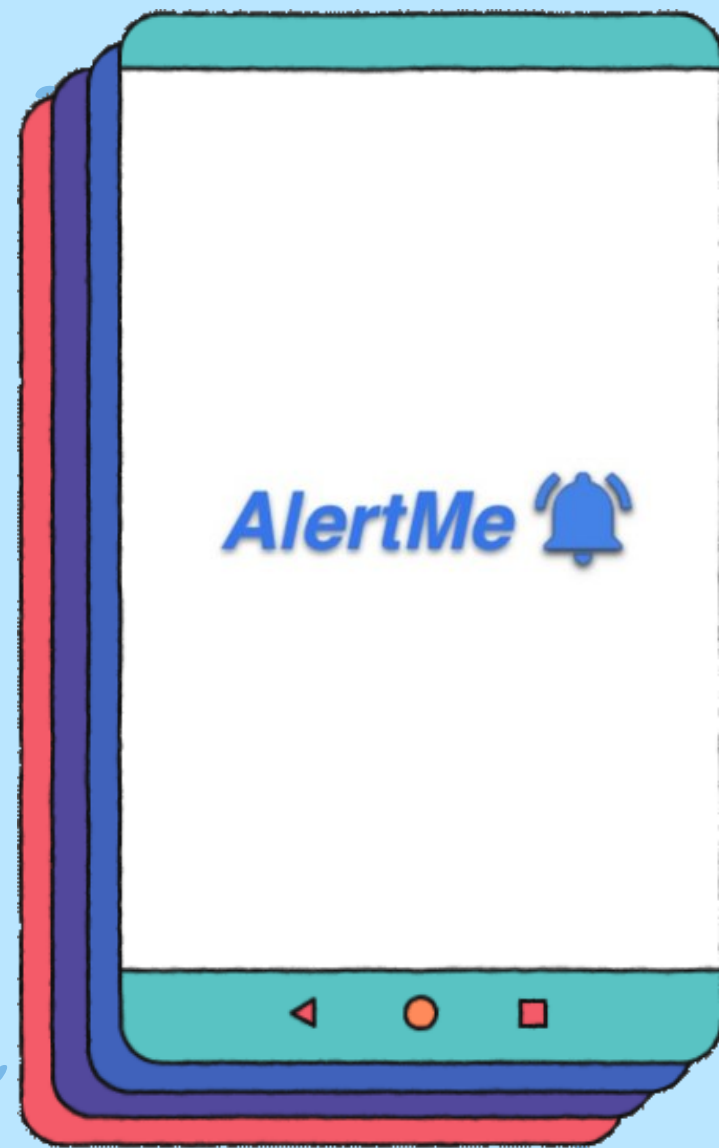


AHMAD MIRZA
ARMAND BIN
SHAZRIL FARIZA
A21EC0006

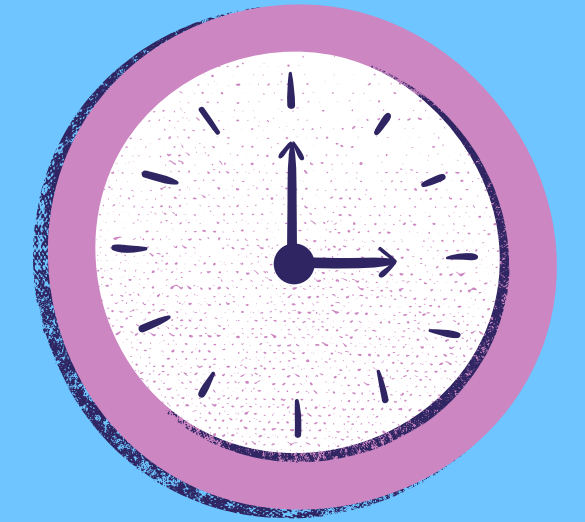


QAISARA
BADRUL HISHAM
A21EC0125

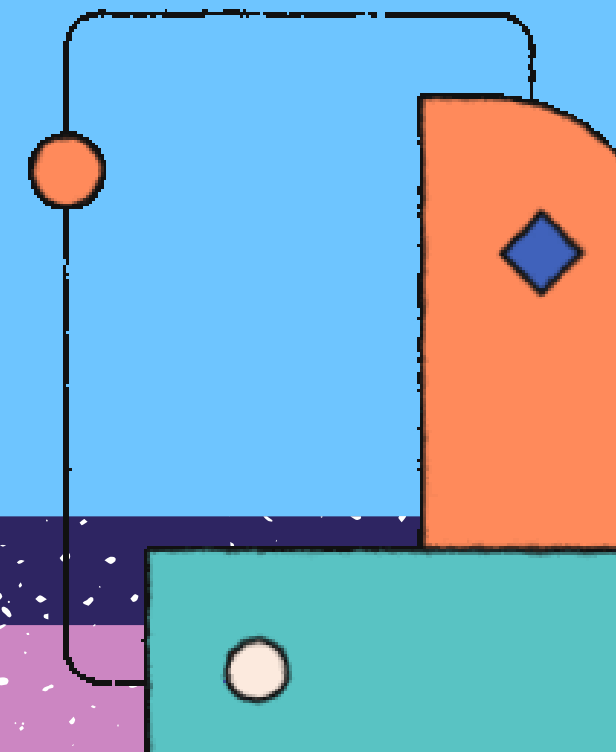
LET US BEGIN



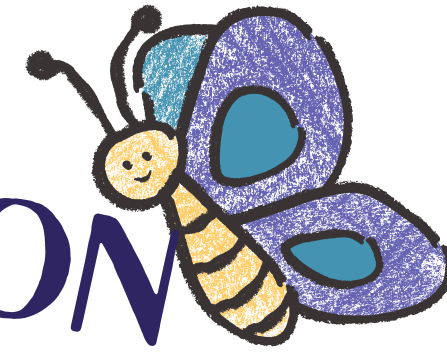
Introduction



In order to get a handle on this Covid-19 pandemic we must learn from previous viruses so that we can not only map the structure of the virus but also tell us how to contain and hence eliminate it. Previously, authority and public faced difficulties in stopping the spread of virus due to the non development of technology. Nowadays, technology has been developed and Artificial Intelligence (AI) plays an important role in preventing the spread of virus. AI can study the virus' history, transmission and diagnostics from previous epidemics so that we are able to make a calculated next move in combating today's Covid-19 pandemic. AI tools and technologies supports us with our new application which is "ALERTME". "ALERTME" is created with AI capabilities to analyse and predict the outbreak hot spots of the Covid-19 virus in addition to calculating the action that needed to be taken.



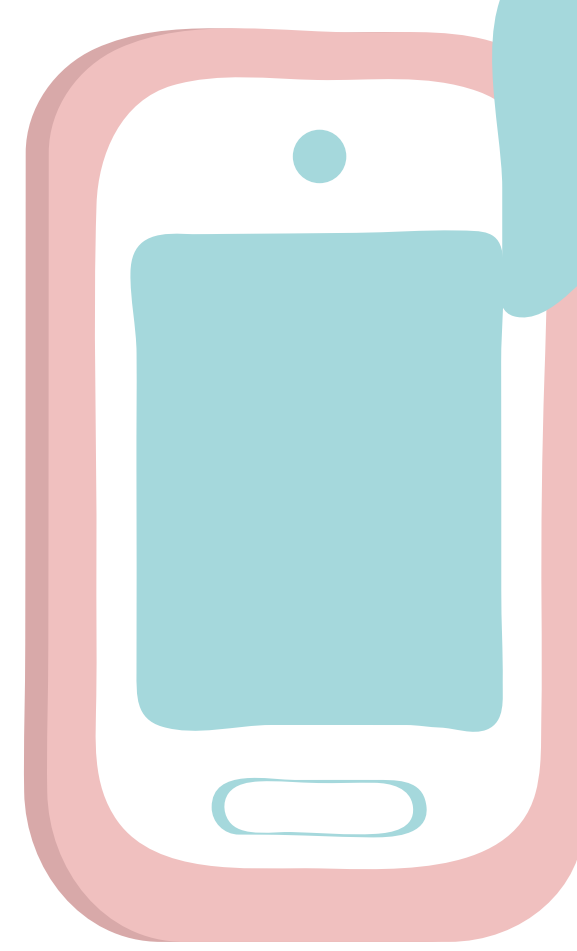
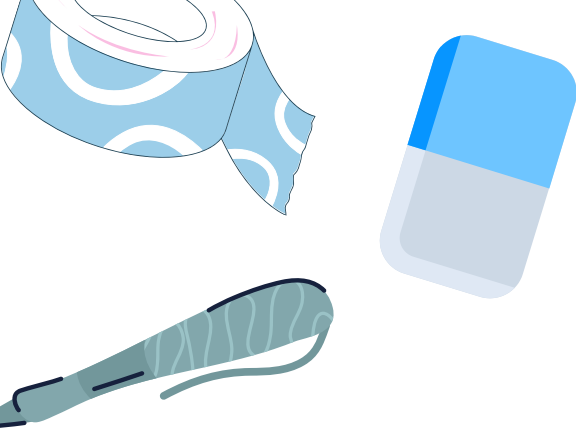
THE INSPIRATION

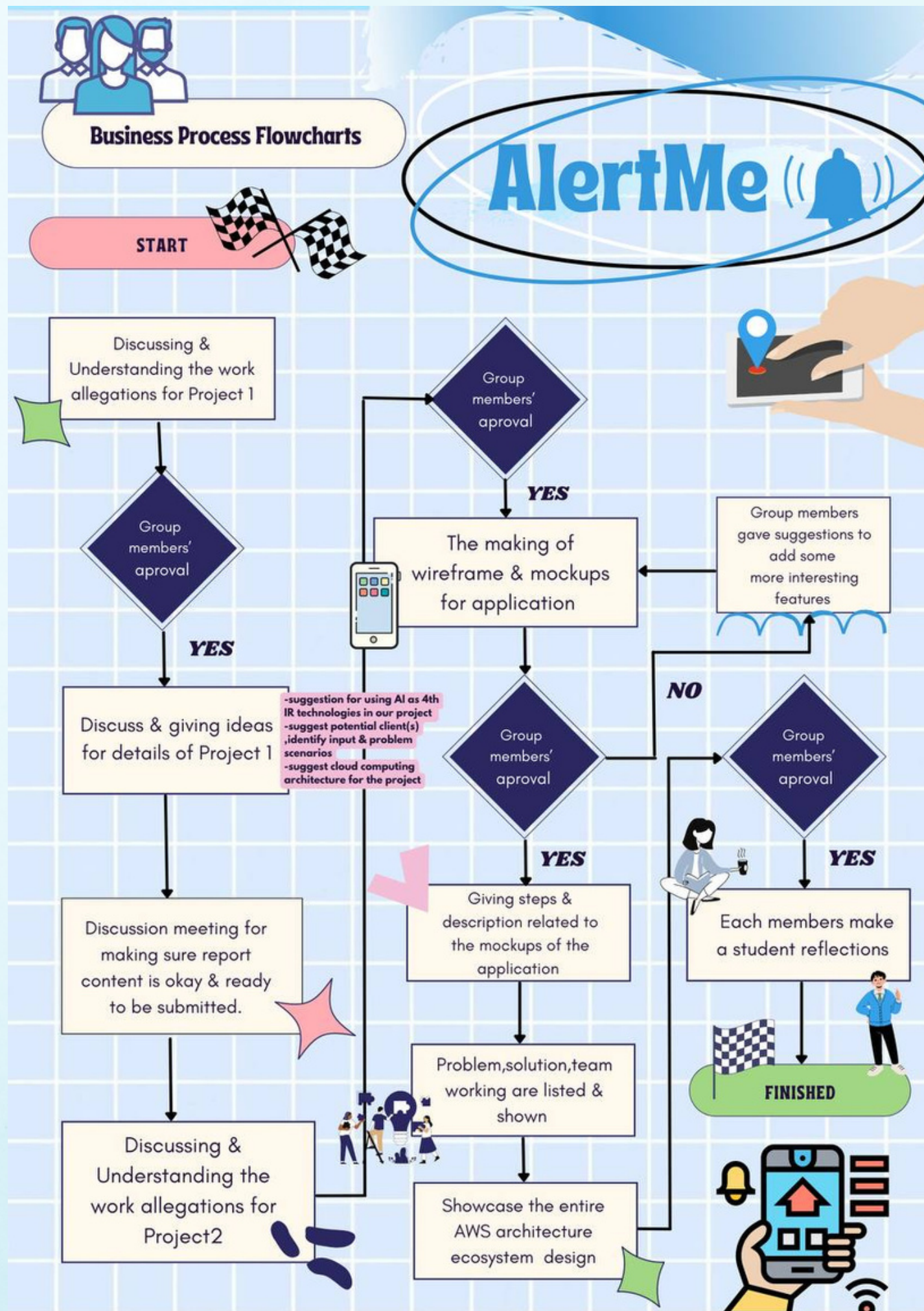


problem statement : the main problem faced by our customer in this climate is the late prevention of the covid 19 outbreaks around the country

our
solution :

build an application that would not only calculate and determine possible outbreak hotspots but also distribute accurate and current information regarding the covid 19 pandemic



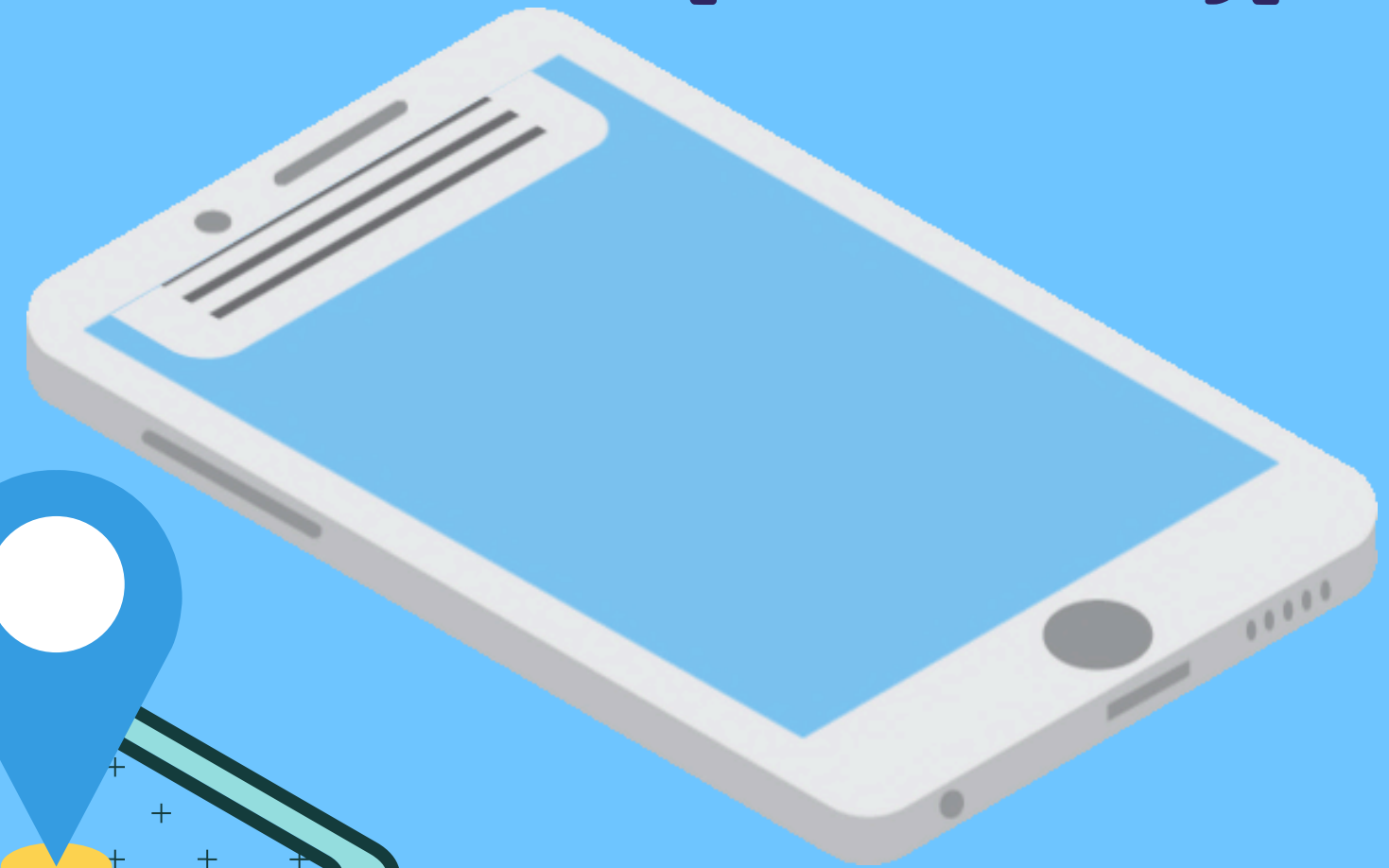
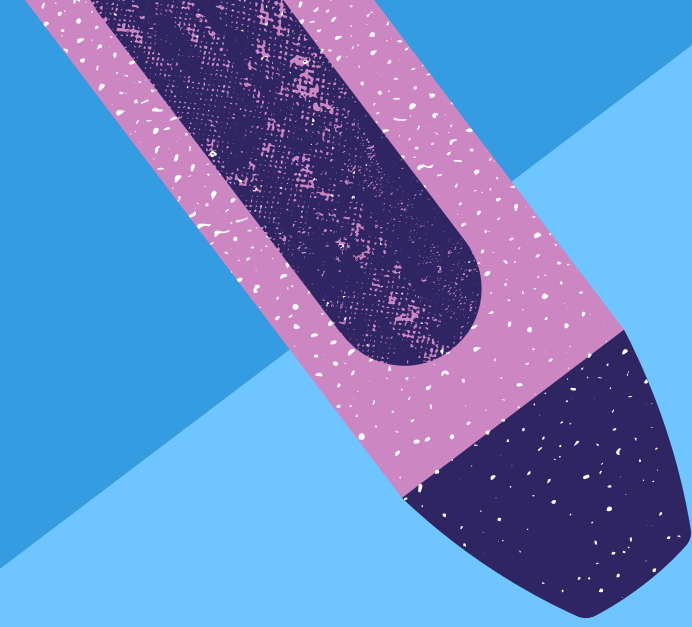


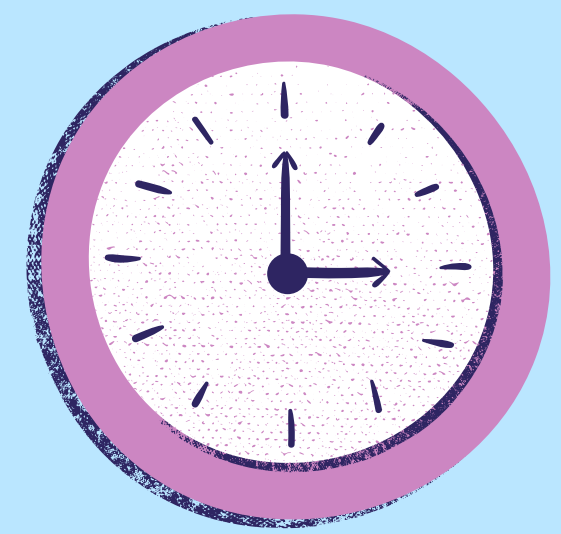
problems faced

- surfaced knowledge on AWS services
- drifting from the original idea
- misrepresentation of task

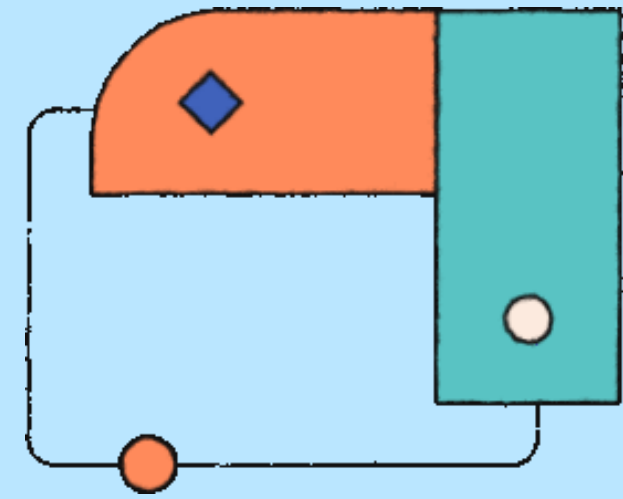
Description of our application prototype

Let us show you the demo !





Summary



In a nutshell, AlertMe plays an important role towards the effort of combatting this Covid-19 disease. As we all know, one of the most effective way to prevent a disease is to be ahead of the disease itself. Therefore, this is where AlertMe plays its part by using sophisticated Artificial Intelligence (AI) capabilities to predict, analyze and calculate the possibility of an area to have an outbreak. Our group also prioritizes the user interface aspect of our project. We designed the project to be as user friendly and as easy to use as possible. Along with the implementation of Amazon Web Services (AWS) that we have selected, we believe that AlertMe can operate and function as well as we anticipated it to be. Lastly, the existence of AlertMe has also proven the significance of AI in this advanced era. It also proves how we can also utilize AI not only in the technological developement but also in the healthcare and disaster prevention sector.

